



News About Town

Gray, Maine – October 2020

GRAY COMPREHENSIVE PLAN 2020

Gray Comprehensive Plan 2020



The Finalized Gray Comprehensive Plan Summary for the November 3rd, 2020 vote is [available for public inspection here](#).

To view the FULL document with all inventory chapters and appendices it may be [read here](#).

A printed copy can be viewed in the Community Development Dept. at Gray Town Hall (24 Main St.) or at the Gray Public Library (5 Hancock St.) during normal business hours.

What is a Comprehensive Plan?

A Comprehensive Plan is a planning document intended to be a guide for communities when making policy and land use decisions over a 10 to 15 year period. The comprehensive planning process is an opportunity for communities to come together, take inventory of current trends and data at that moment in time, and look ahead at the challenges and opportunities facing the community. It is a chance to unite over a common vision of the future, while prioritizing common values determined by public input. After taking inventory of current trends and data, a public process is conducted to create a vision statement and values that will ultimately guide the recommendations of the Plan. The public process will also help to guide the development of a Future Land Use Plan which will determine where the town directs or discourages future growth and development.

The process of comprehensive planning is often the start of further conversations in the community around issues related to preservation of open spaces and rural character, economic development, housing options, how to serve the community's youngest and oldest residents, and other big topics. The Comprehensive Plan can help inform of those discussions and very often the Comprehensive Plan will include recommendations for further planning and policy work.

Why is it important?

The Comprehensive Plan is an important planning document because it guides policy decisions, zoning decisions, and municipal investments. The Comprehensive Plan consists of inventory chapters covering topics such as the economy, transportation, recreation, housing, and population. The inventory chapters provide a detailed overview of each topic which is important for long range planning decisions. Each chapter includes associated goals, strategies, and policies that will dictate how the Plan is implemented. The inventory process is a critical foundation that sets the stage for a public process that will ultimately craft the community's vision for the future and identify important shared values, as well as form the future land use section of this Plan. Taking inventory of our Town, as it stands today, allows for our community to be realistic about planning for the future. Being able to reflect on how and where Gray has developed in the past will help determine the course to take in the future.

Lastly, a Comprehensive Plan, approved as consistent by the State makes municipalities eligible for State grants and loans, and allows municipalities to legally impose a zoning and shoreland zoning ordinance.



Election Information November 3, 2020

GENERAL ELECTION & LOCAL REFERENDUM ELECTION—NOVEMBER 3, 2020

On **November 3rd** there will be a **General Election** and a **Local Referendum Election**.

The polls will be open at **Newbegin Gym** at Gray Town Hall on **Tuesday, November 3rd** from **7am-8pm**.

ABSENTEE VOTING/ BALLOTS:

You can now request an absentee ballot online for November's Presidential Election, and check the status of your request.

Click [HERE](#) to request your ballot today. This service is available on the Maine.gov website until 5:00pm on October 29, 2020.

To see the status of your request for an absentee ballot click [HERE](#).



EARLY IN-PERSON ABSENTEE VOTING: AVAILABLE AT TOWN HALL

Early in-person absentee voting for the November 3rd Election begins Monday, October 5th, in Gray! Gray residents can vote in the Town Clerk's Office at the Town Hall during normal business hours, which are:

- Mon-Wed: 8:30AM - 4PM
- Thu: 8:30AM - 6:30PM
- Fri: 8:30AM - 12PM
- Holidays: Closed

Ballots can be returned via mail or by dropping them off in the ballot box which is being installed near the front door of Town Hall. Ballots must be returned by 8 p.m. on Election Day.

The last day to vote in-person via absentee ballot (with no reason) is Friday, October 30.

SAMPLE BALLOTS

View sample ballots (coming soon) for the upcoming election on our [Elections Page](#).



A NEW CHAPTER FOR KIDS CLUB

All of us at Gray Parks & Recreation want to say thank you for your continued support as we navigate what it means to offer recreation services in a COVID 19 world. Significant closures beginning in March altered our program and like many private businesses we took a significant participation loss. With all loss comes opportunity to adapt and grow. With support of the Town, and collaborative efforts with New Gloucester Recreation, we traded sports and child care for the **Community Wellness Outreach Program**. We thank GNG Seniors Helping Seniors and several area food pantries for allowing us to take part serving the incredible community we live in.

With that said, it was made clear early on that parents needed our child care support more than ever. The idea school would not continue as a Monday through Friday establishment brought challenges that parents and caregivers were not prepared for. Sarah Rodriguez, Recreation Programmer, began working alongside MSAD 15 on the **Back to School Taskforce**. The collaborative efforts of the taskforce encouraged us to transform our Kids Club Before and After School program to become a full-day remote learning location.

PAVING A NEW WAY FOR A NEW KIDS CLUB

The commitment and drive of the Child Care Services team at Gray Parks & Recreation welcomed this challenge. It was made evident in July when our department issued a survey to parents within GNG to assess the child care needs across our communities if the district would enter into a modified school year. Our well established Kids Club (which primarily runs out of Newbegin Gym) could only accommodate fifty children per CDC guidelines and survey results showed a need

for 147. With little access to a remote learning support for school aged children with in GNG we again partnered with New Gloucester to help them establish a municipally run remote learning location. In

August of 2020 we proudly launched a new program called **GNG Kids Club**. Together, we increased our capacity to serve a total 70 children in our communities. No matter the education model the District chooses to operate, we will continue to support caregivers and students at Newbegin Gym and the Community Building in New Gloucester. We thank the Town for allowing us to safely separate into smaller groups using Pennell and the Gray Public Library. The commitment to support families in Gray is noted and appreciated. We could not do this without the Town's support and our faithful staff that have stepped up to meet the community needs during this crisis.

"I would like to give a HUGE thank you to all the staff that helped create a remote learning childcare for us parents who can't work from home!! You are an amazing asset to this community!"

Thank you for everything that you do."

Parent to 4th Grade Dunn School Student

Has it been easy? No, no transformation ever is. Children in Kids Club are familiar with our staff providing fun games and activities after school. Now, to the students in our care we are another tool in their box of learning and growing. We are beginning to understand how each child learns and what each child needs for support. We continue to partner with MSAD 15 to practice the same growth mindset exercises used during their school day. We have showcased the words **Safe, Responsible, Respectful and Kind** on our walls because we know these are the key words students see at school every day. With the help from Nutrition Services at the District we are now serving breakfast and hot lunch every day for free. While it is our wish that all students can return to school Monday through Friday safely, we are humbled to walk this new road with our parents, the students, and the incredible teachers and administrators at MSAD 15. Thank you all for helping us develop this wonderful program.



A VERY GNG HALLOWEEN

The Parks and Recreation Departments from Gray and New Gloucester are joining together to offer two great contact-free events this Halloween. Registration for this event is required and will be limited to those who sign up in advance. Each event has three time blocks available and number of participants will be restricted to CDC recommendations.

Visit www.grayrec.com to register for one or both of these unique events!

VOLUNTEERS NEEDED!

- Trunk Decorators-
- Tour Guides-
- Haunted Forest Walk Characters-
- Check In Attendants-

Sign up at grayrec.com!

COSTUME PARADE & TRUNK OR TREAT NEW GLOUCESTER FAIRGROUNDS PARK

Children are invited to parade around the track and view our spookily decorated trunks. Trunks will be set 15 ft. apart. We will have grab-and-go treat bags available at each trunk and have fun photo opportunities along the way! Non costume face coverings are required for this event. More to come!

HAUNTED PENNELL FOREST WALK PENNELL TRAIL IN GRAY

Dean is moving his beloved haunted lab outside this year! As always our tour guides will not disappoint as you walk through our trail at Pennell Park. This tour is recommended for ages 7+. Options for a "Casper Tour" or a "Poltergeist Tour" will be available. Grab-and-go treat bags will be available at the end of the trail. Non costume face coverings are required.



For More Information, please contact:

Sarah Rodriguez, Recreation Programmer— Gray
srodriguez@graymaine.org

Morgan Rocheleau, Recreation Director— New Gloucester
mrocheleau@newgloucester.org

NON COSTUME FACE COVERINGS ARE REQUIRED

Gray Historical Society

GHS Announcement!

The Gray Historical Society is pleased to announce the opening of the Village History Walk.

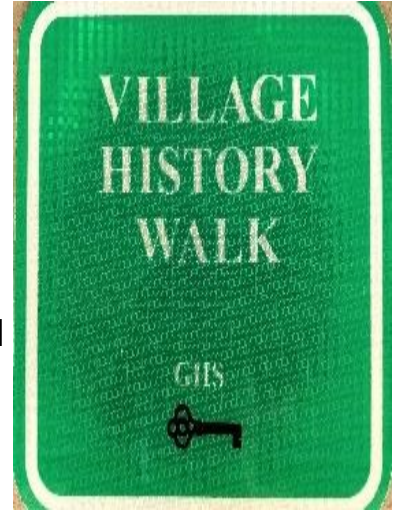
Enjoy a two-mile self-guided and leisurely historical journey through Gray Village. Green signs guide the way past historic buildings, homes, and monuments. The route through Gray Village travels along sidewalks and marked crosswalks to ensure your comfort and safety.

Free brochures with featured attractions, a map, and historical background are available at the Gray Town Office. For an on-line interactive map go to grayhistorical.org, find MAPS in the main menu, then select HISTORICAL SITES from the dropdown menu.

Your tour starts by parking at the Pennell Complex. Using your brochure map, follow the green **Village History Walk** signs for a fun and educational stroll through our Village.

Following the entire route, or any part of it as a great way to get your daily exercise while learning more about Gray history.

Get out, walk, and learn!



GHS museum is also looking for these items:

- Full size body mannequins for displaying military uniforms;
- Free-standing hat rack – preferably from period of early 1900s or earlier – to be displayed in the Selectman's office;
- Ink well and quill pen (*from period early 1900s or earlier*)
- Antique display cases

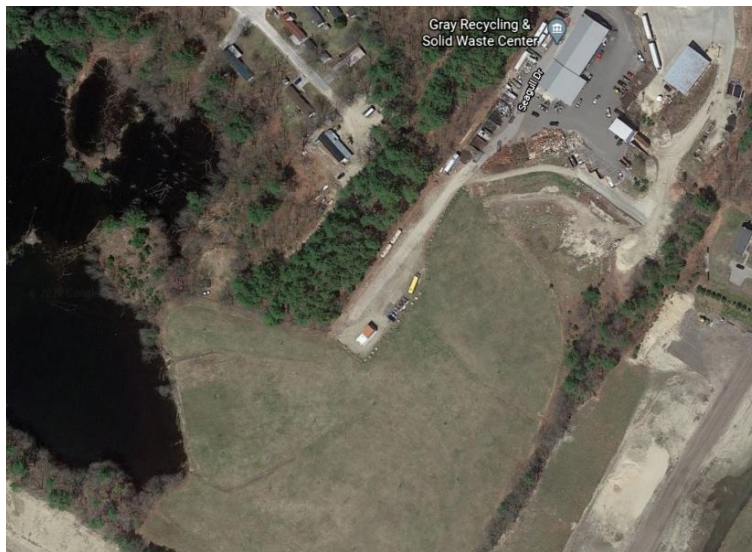
If you have any of these items and would like to donate them to GHS please contact us at 207-657-4476 or @ info@grayhistorical.org.

Welcome to the October Recycling Corner!

Town Solar

Keep an eye out! Very shortly residents will see the new Solar Array being constructed at the landfill. Final preparations for the construction phase are underway. Construction will begin in the next month or so.

The Town Council approved the construction and entered into a long term power purchasing agreement with Revision Energy and a Third Party Investor. The Third Party Investor assumes all the upfront costs in exchange for selling electricity to the Town and the Federal and State tax credits available to those building renewable capacity. The Town will see immediate savings in annual electricity costs which will increase each year. In year six, the Town will have the option to purchase the array using savings from the electricity costs. This would allow the Town to produce its own electricity and save a projected \$2.9 million dollars over the life of the array.



The array is projected to cover 98% of the Town's electrical needs (which is essentially as close to 100% as recommended due to how the credit system work). The array will consist of over 1,000 photovoltaic panels which will produce over 500,000 kilowatt hours of clean, solar electricity each year. This is the equivalent to taking 75 passenger cars off the road, or

planting 6,000 tree seedlings.

Recycling Committee would like to thank this council for their work on this long term project. Well done! Stay tuned for photovoltaics education opportunities from us.

Glass

Glass is going into the landfill at present since there is no market for it. We hope that some market will emerge like a state policy to it in asphalt recipes. Until that happens, *we would like people to reduce consumption or continue to sort it.* Let's please keep it out of the hopper.

Masks



People not wearing masks have made threats to staff at the transfer station. It seems that some people are looking for confrontation. This is abusive. It needs to stop. Please talk to your people. Wear a mask. Be kind.

Put a Lid on It, Bub!

The Recycling Committee is developing a campaign to reduce litter in Gray. We received a small grant from NRCM for this project. We are considering artwork for memes and a sticker design to educate the town about the issue. More to come.



TALK WITH YOUR TEEN ABOUT VAPING



For More Info:

<http://www.cascobaycan.org/vaping-prevention/>

Casco Bay CAN
CREATE AWARENESS NOW
f www.cascobaycan.org t

A grant funded project sponsored by
Cumberland County Government *Maine*
Cumberland County

Tip of the Month

SHARE THE FACTS TO HELP PREVENT VAPING

Why Don't You Want Me To Vape?

Your brain is still developing until about age 25. Most e-cigarette and vaping products contain nicotine, which can change your brain and you can become addicted to nicotine.

What's The Big Deal About Nicotine?

One puff of nicotine disrupts normal brain activity, causing chemical changes throughout the brain.

Isn't Vaping Healthier Than Smoking Cigarettes?

E-cigarette and vaping products produce a vapor that often contains harmful chemicals and toxins that can make people sick and some are known to cause cancer.

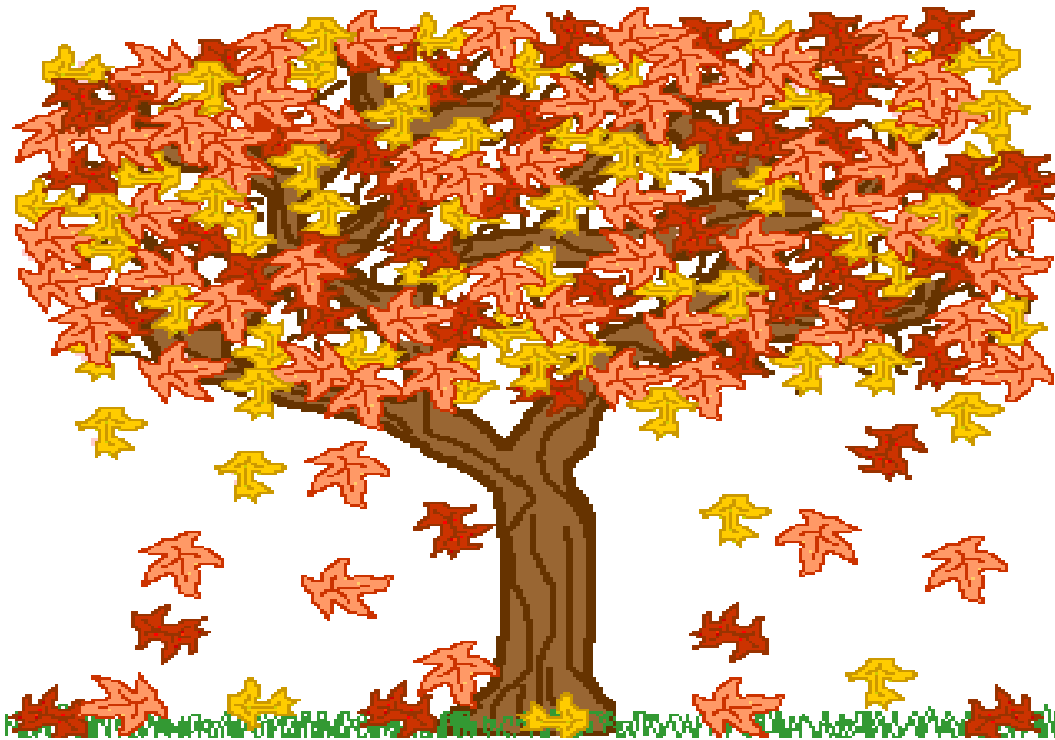
Talk early, talk often and keep talking. Base your messages on facts not fear. Teens want to know the science.

WE Listened to Gray's Senior Citizens

Volunteers are standing by!

Gray Lifelong Living Committee Survey results show that some of our elder citizens may need a little help with home maintenance chores – especially AUTUMN YARD CLEAN-UP.

We are coordinating with the GNG HS Community Service Club volunteers to provide these elders some well-deserved assistance.



If you, or someone you know, is 65 or older and needs assistance with fall yard clean-up, you can sign up by emailing your answers to the [questions below here](#) and a committee member will get in touch with you to schedule. Our intent is to accommodate as many people as we can but will fulfill first come first serve with priority given to the eldest and disabled.

Name: _____ Age: _____ Disabled: Y__ N__

Phone: (_____) _____ - _____ Email: _____