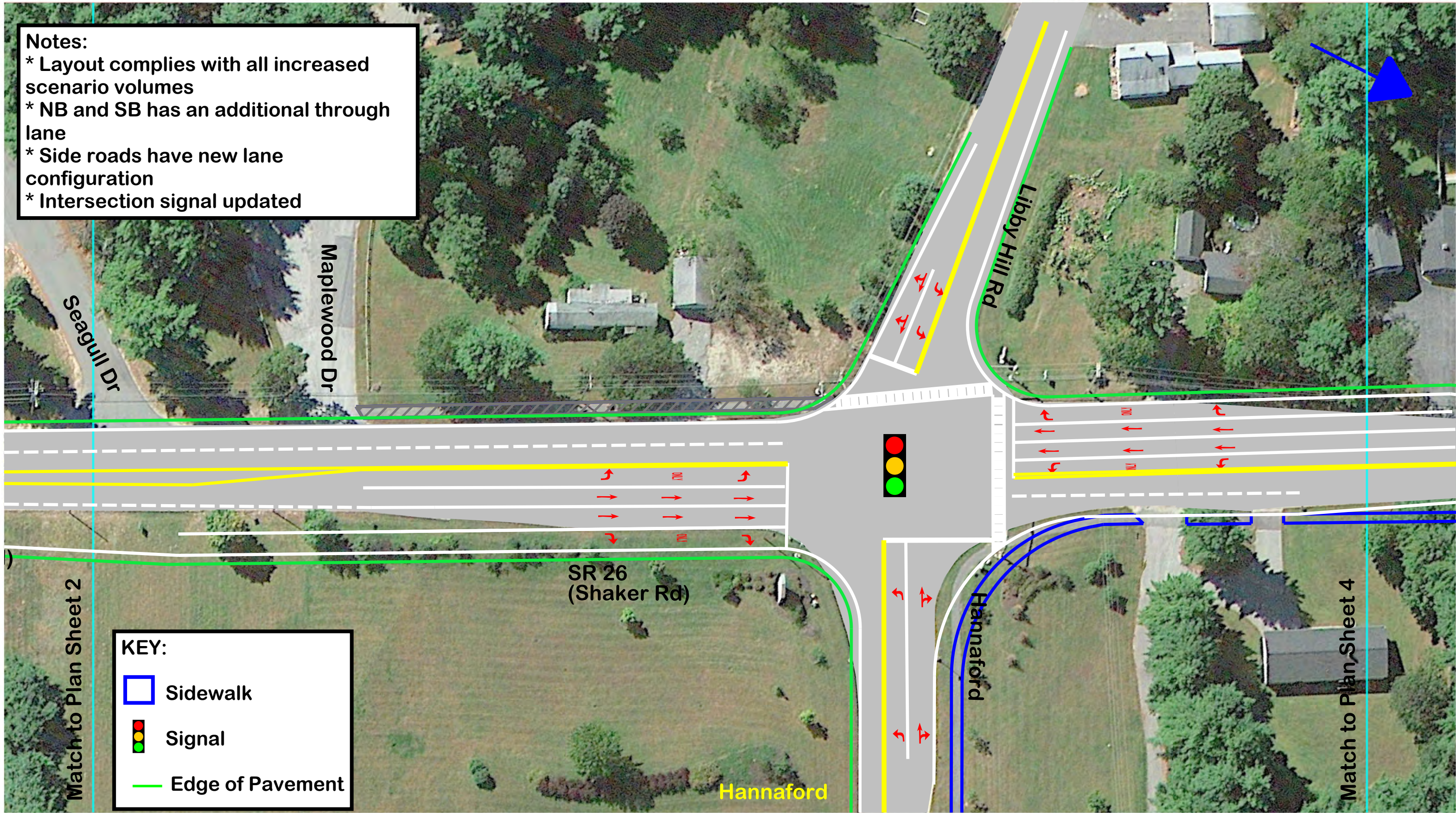
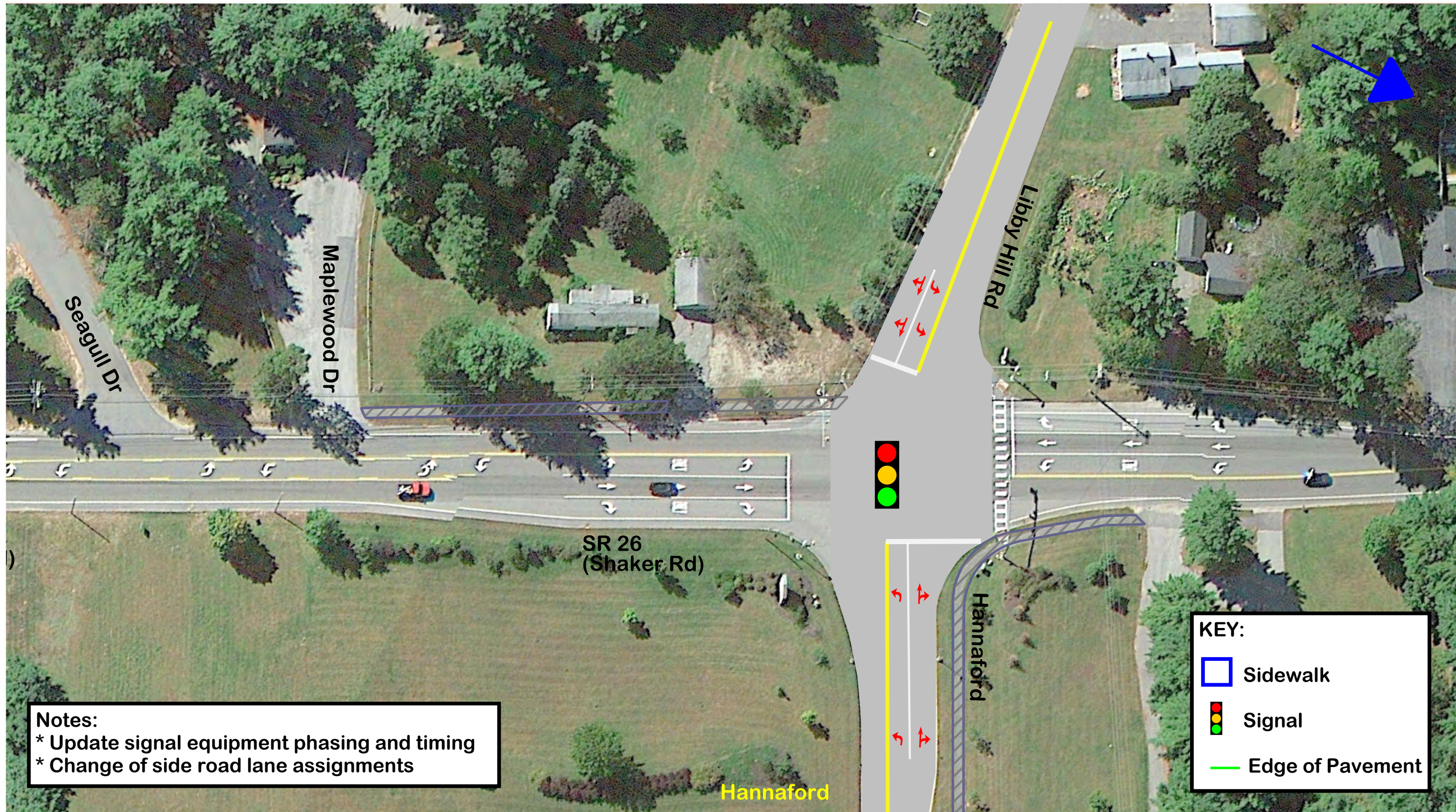


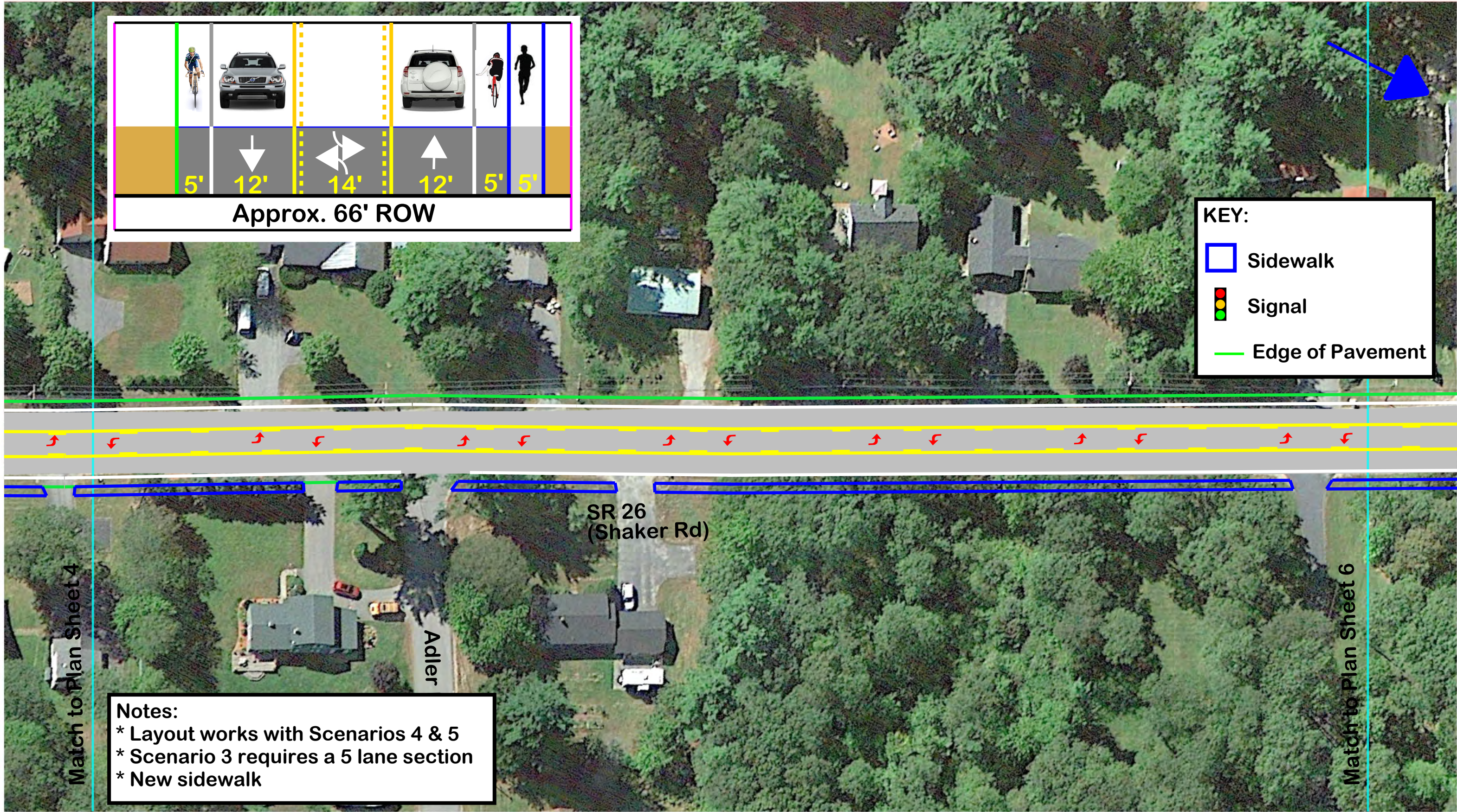
Notes:

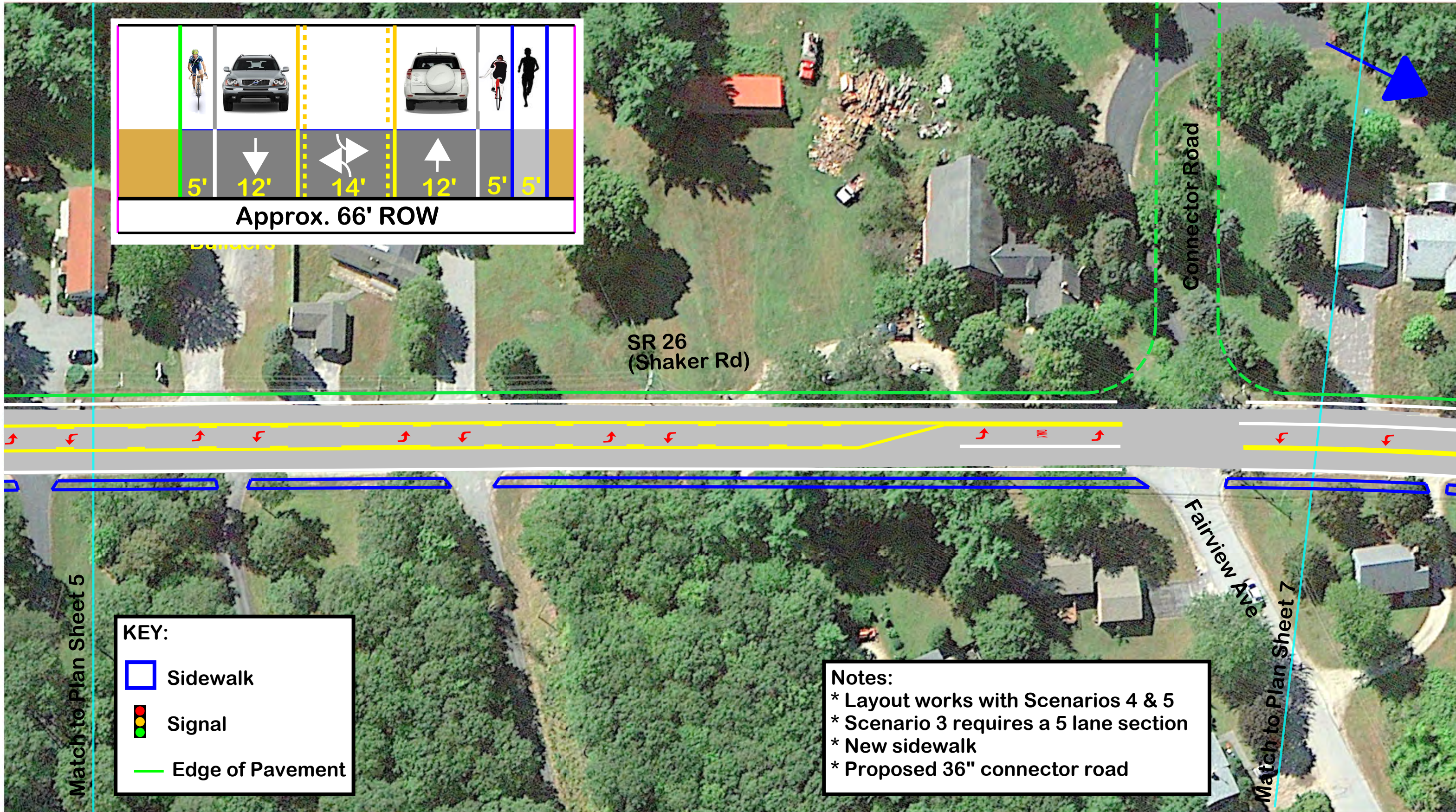
- * Layout complies with all increased scenario volumes
- * NB and SB has an additional through lane
- * Side roads have new lane configuration
- * Intersection signal updated

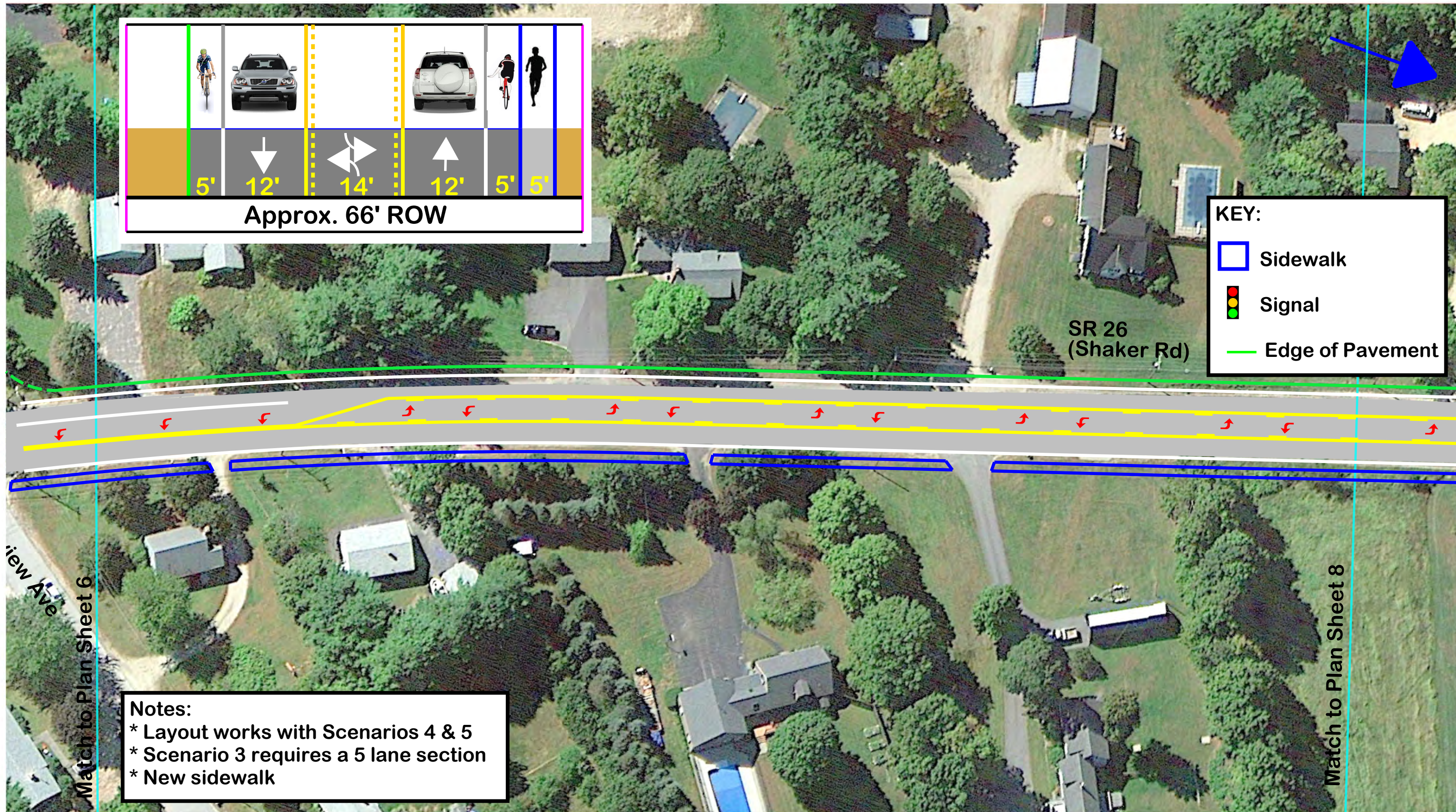


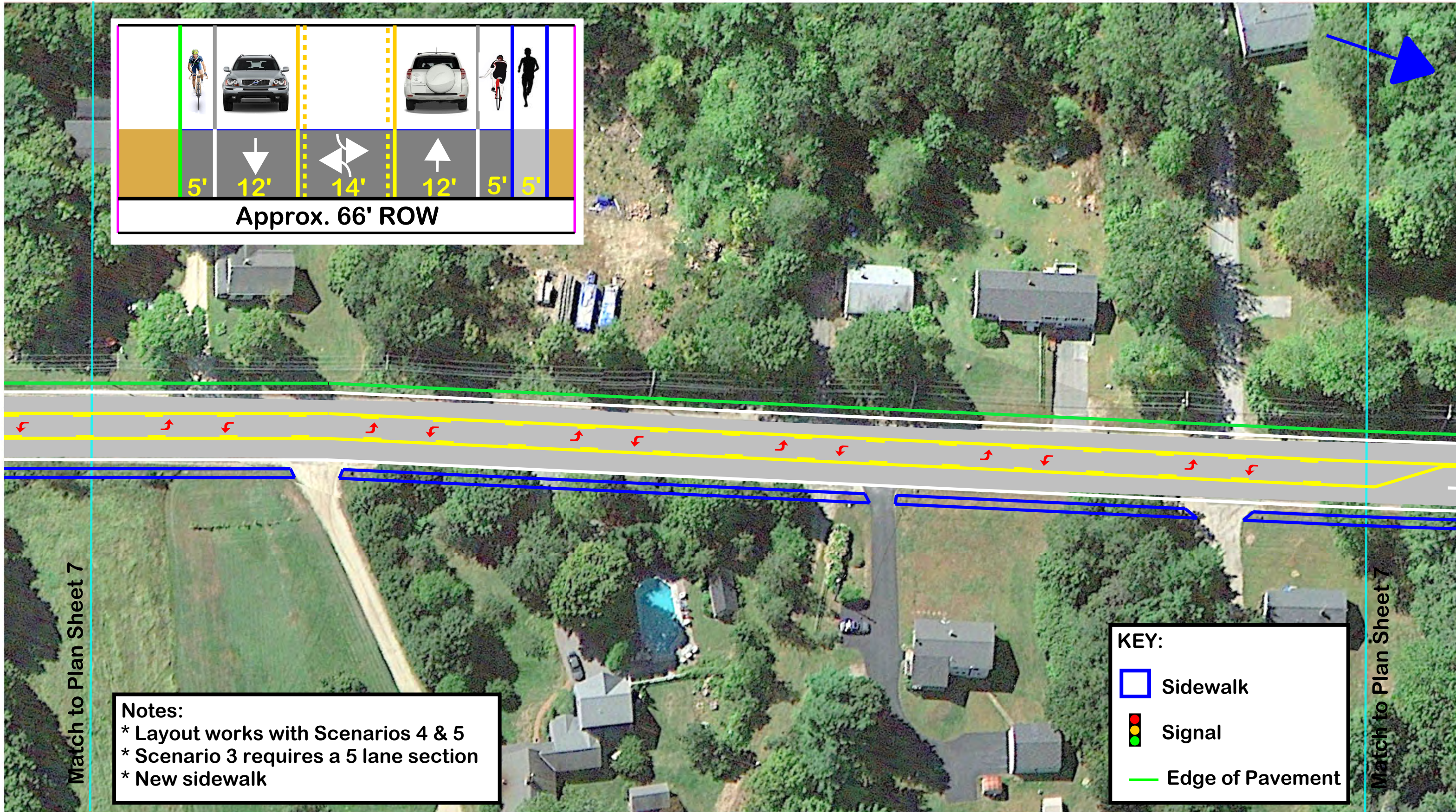






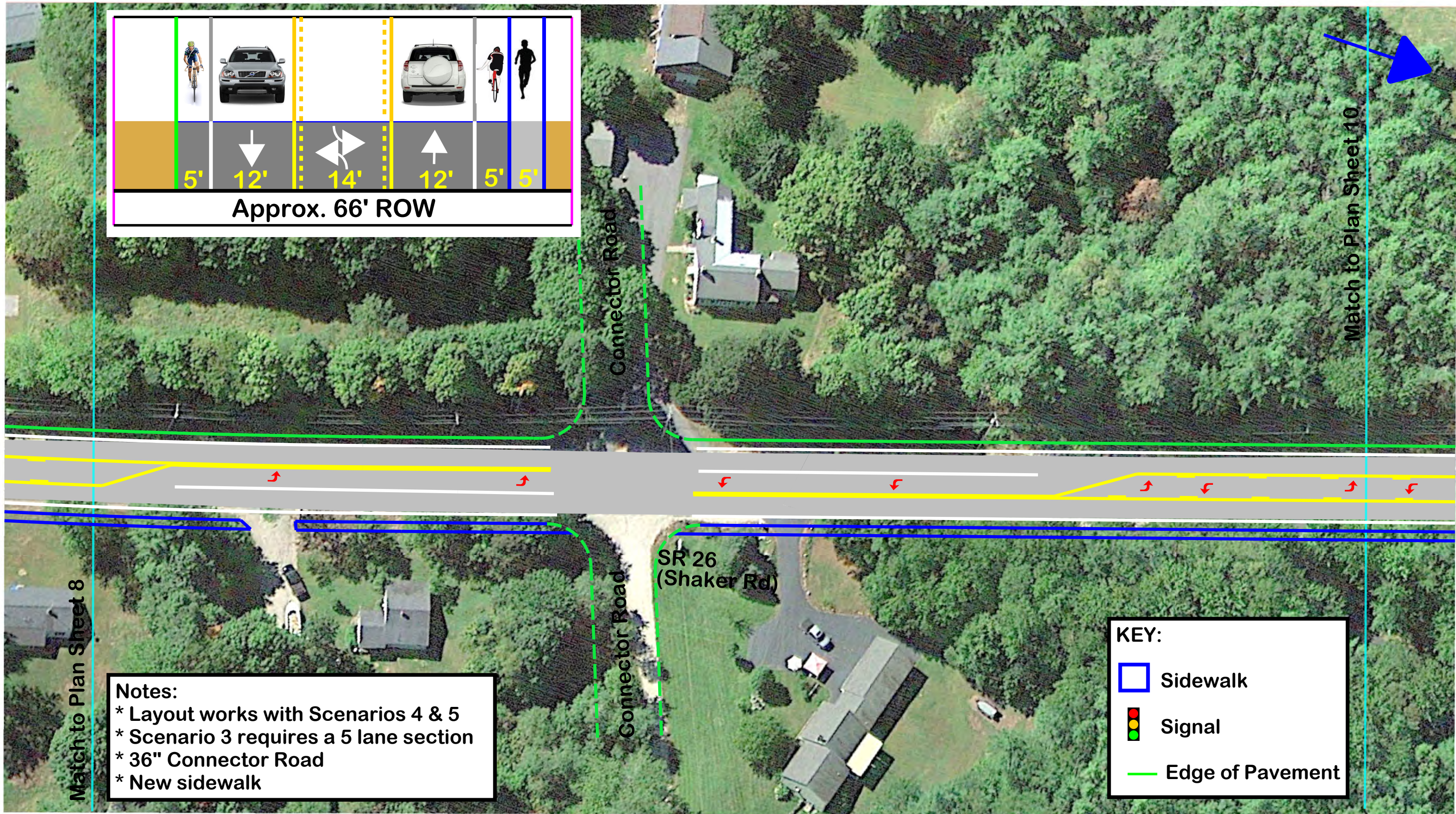


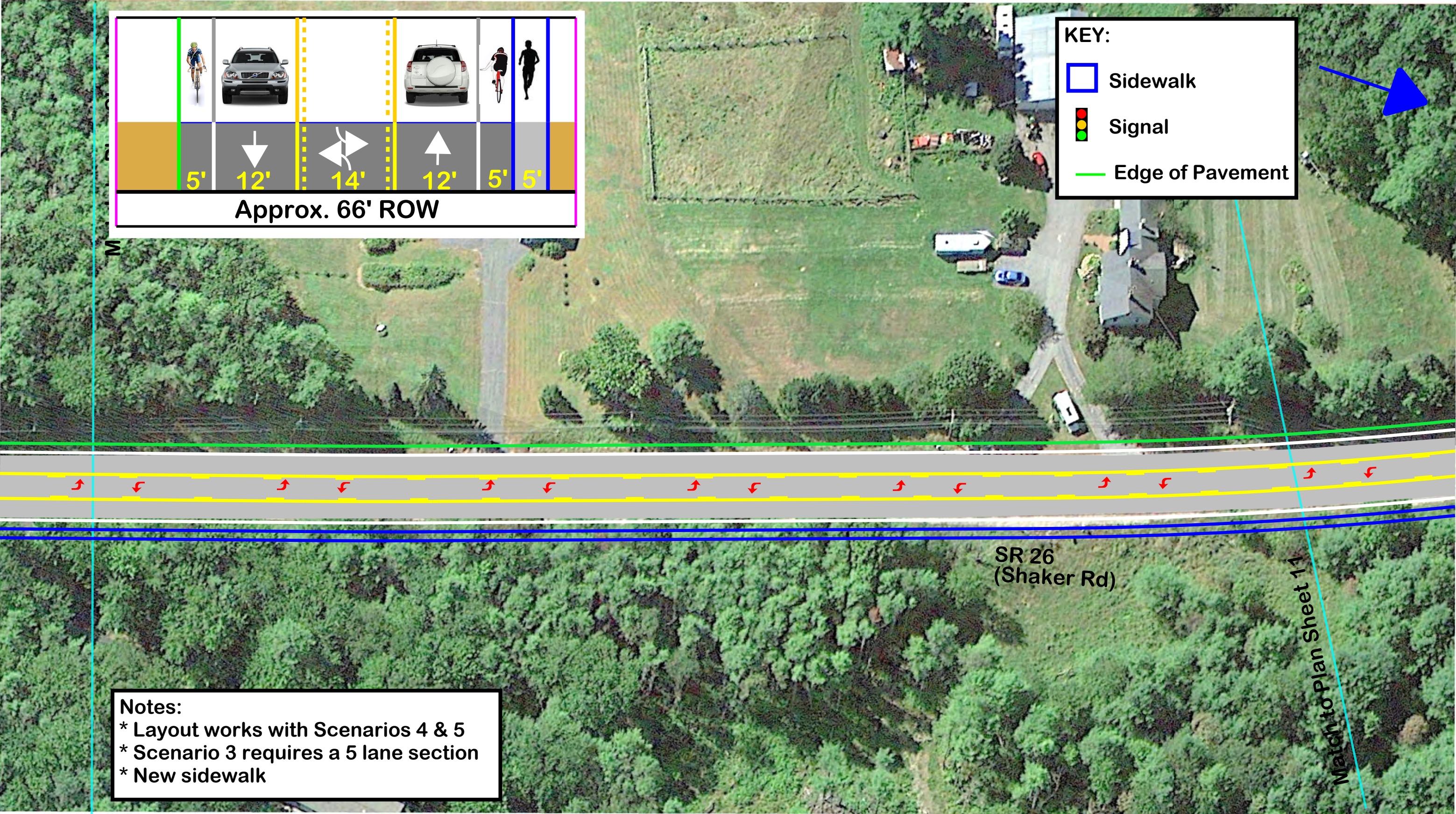


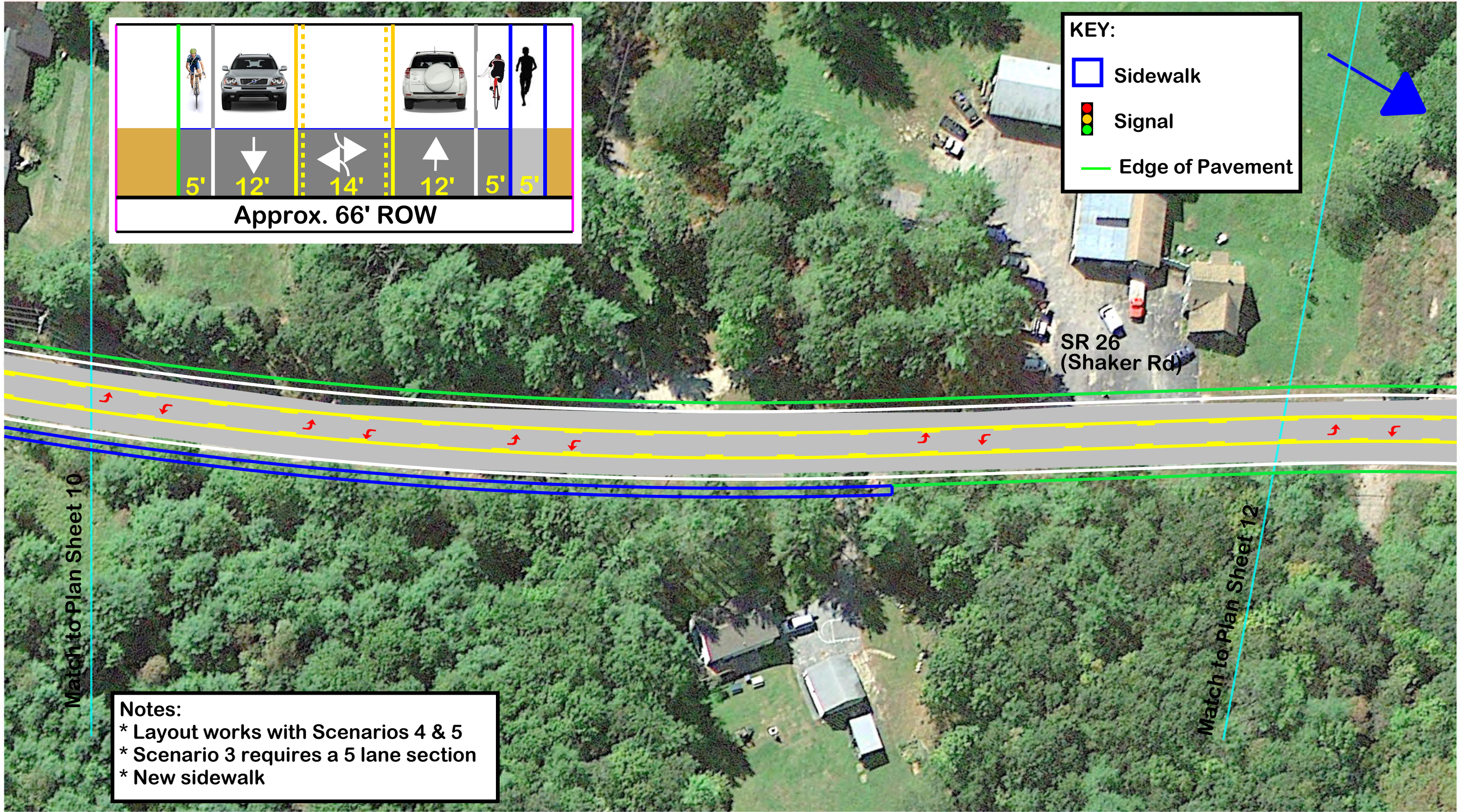


Notes:
 * Layout works with Scenarios 4 & 5
 * Scenario 3 requires a 5 lane section
 * New sidewalk

KEY:
 [Blue Outline] Sidewalk
 [Yellow/Red Outline] Signal
 [Green Line] Edge of Pavement










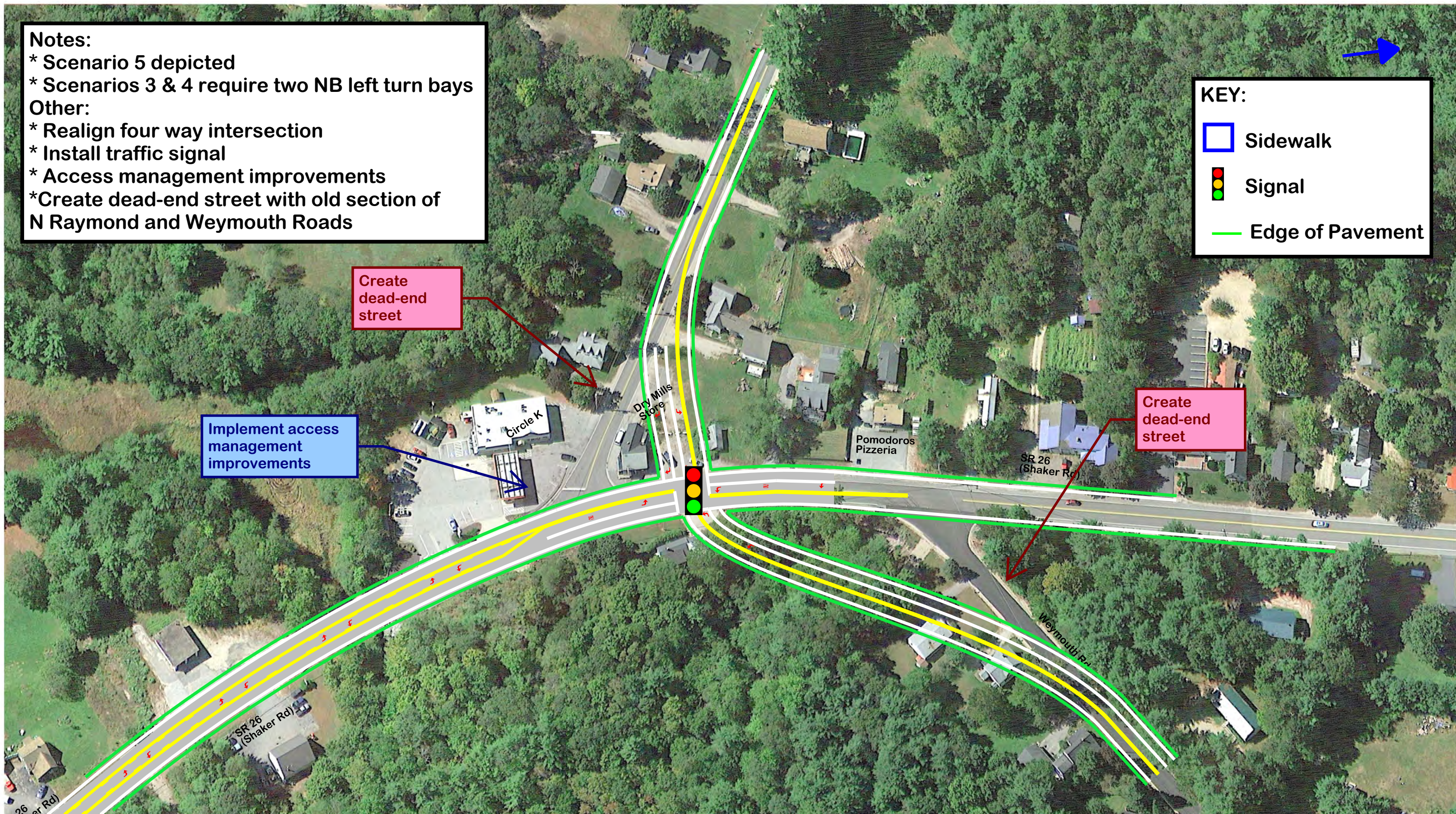
Notes:
 * Scenario 5 depicted
 * Scenarios 3 & 4 require two NB left turn bays
Other:
 * Realign four way intersection
 * Install traffic signal
 * Access management improvements
 * Create dead-end street with old section of N Raymond and Weymouth Roads

KEY:

 Sidewalk

 Signal




 Edge of Pavement



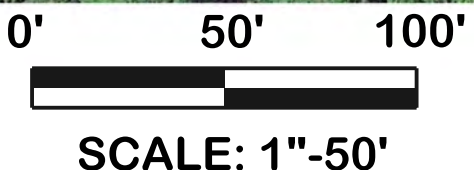
- Notes:
- * Scenarios 4 & 5 depicted
 - * Scenario 3 requires an additional NB through lane at North Raymond Road
- Other:
- * Install two new signals
 - * Create new four leg intersection with Weymouth Road
 - * Limit turn movements at existing N Raymond Rd Intersection
 - * Implement access management

Access Management

KEY:

-  Sidewalk
-  Signal
-  Edge of Pavement

Plan Sheet 12a:
Triangle Alternative

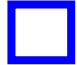




DRAFT

- Notes:
- * Signalization of N Raymond Rd
 - * New left turn bay NB
 - * Separate left and right turn lanes on N Raymond
 - * Implement access management improvements

Access Management

KEY:

-  Sidewalk
-  Signal
-  Edge of Pavement