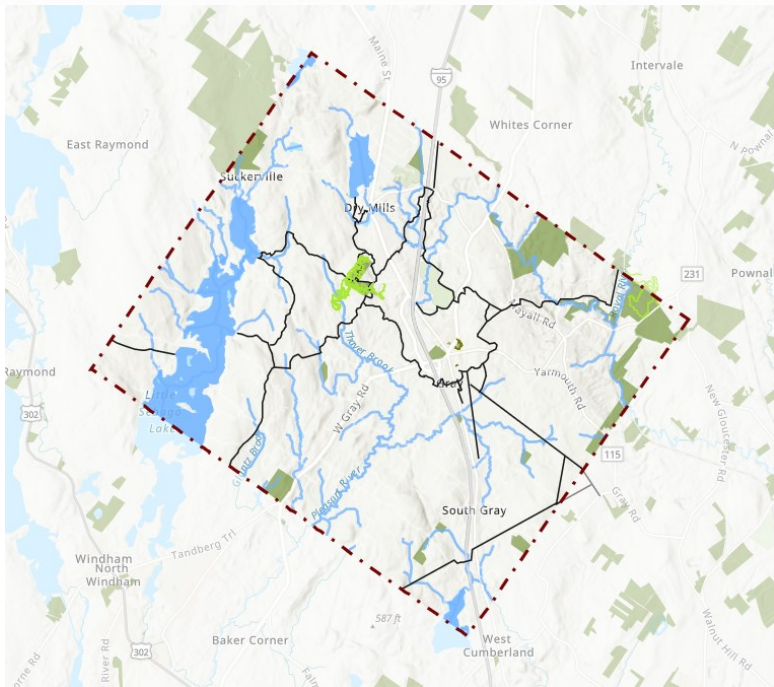




News About Town

Gray, Maine - January 2020

LAND USE IN GRAY IS CHANGING GIVE US YOUR SAY!



THERE WILL BE A FUTURE LAND USE OPEN HOUSE & WORKSHOP on JANUARY 29TH 10AM-9PM

- Where will future development happen in Gray?
- What will that development look like?
- How much should we expect?

View proposed development maps and more.

Stop in anytime from **10am to 9pm** to discuss future land use in Gray with the Comprehensive Plan Steering Committee;

OR

Attend a formal session and working group at **2PM** or **7PM**.

Wednesday, January 29th 10AM-9PM

Snow Date: Thursday, January 30th

Council Chambers

Pennell Municipal Complex

24 Main Street

Questions? Email complan@graymaine.org

[Take the Future Land Use Survey](#)

[Watch the Information Video](#)

Consider 'bee'-ing on the Blueberry Festival Committee!

Do you enjoy planning and event logistics? Good with marketing or purchase orders? Or, are you a (former) G-NG Patriot Parent? Want opportunities to connect with local business owners and/or customers? Or like coordinating volunteers? If so, consider 'bee'-ing on the Blueberry Festival Committee. It's a great way to: pay it forward, learn about G-NG groups, build community engagement, and promote Gray. It takes 4-5 volunteers less than seven months plan this one-day event which draws over 3,000 people from near & far. We'll meet once a month starting end of January.

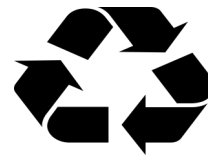
FMI email: BlueberryFestival@Graymaine.org or visit **Gray Blueberry Festival** on Facebook.

The 5th annual Gray Blueberry Festival will be held **Saturday, August 8, 2020**, and showcases wild Maine blueberries in ice cream, pies, muffins, crepes, lemonade, donuts and other great foods plus 60+ crafters, local vendors, community and G-NG school clubs, and musicians. Throughout the day you'll hear: the dunk tank splashing; live music; laughter and folks cheering on contestants; horse hoofs from the wagon rides. Enjoy the game of corn hole, rock climbing, clock tower tours, and talk with a beekeeper, garden naturalists, homesteaders, animal farmers, car enthusiasts, and yes there IS more. Shop local - this fun-filled community Festival is made possible through our generous Gray business sponsors, and is hosted by the Town of Gray.





Welcome to the January Recycling Corner!



Take Our Survey!

We have a goal of reducing waste by 10% across town!

Let us know how you think about that!

[Complete this survey. https://forms.gle/cmMohsUwpJgaZBsJ8](https://forms.gle/cmMohsUwpJgaZBsJ8)

**Join Gray
Community and
Economic
Development
Committee at
GNGDC Business
Summit 2020 March 5th!**



WWW.PORTLANDFOOD.COOP

CEDC is proud to support The Gray New Gloucester Development Corporation's (GNGDC) annual Business Summit, in cooperation with the town of New Gloucester. The Summit is always a community weaving event, where local businesses can connect and learn together. For this year, the CEDC recommended the theme of cooperatives.

"This year's program about local food coops is quite timely as there is a groundswell of interest in starting one in the GNG region," said Tracy Scheckel of the GNGDC. John Crane, the General Manager of the Portland Food Coop will be keynote speaker. Crane has been with the coop since its inception and will be sharing his experience, tips, and advice for communities looking to start a food coop.

GNGDC Business Summit 2020 is scheduled for **Thursday, March 5th at NU Brewing at 437 Lewiston Road in New Gloucester**. Doors open at 5:30 for networking and the local business showcase; there will be complimentary appetizers from Yolked Food Truck, and NU brews for purchase.

Local businesses interested in space for the showcase should contact J.scheckel@gngdc.com to reserve a spot. Space is limited and on a first come first served basis.

The event is free to GNG residents and businesses; however, the caterer would like a headcount and the GNGDC asks that attendees RSVP by completing a form at gngdc.com/business-summit-2020 or by leaving a message at 657-2033. February 27th is the final date for RSVPs and business showcase reservations.

Put it on your calendar now.



WINTER USES & TRAIL DESCRIPTION

Only Nordic Skiing on Wide trails:

Deer Run, Holmquist Hollow, Moose Odyssey, Turkey Trot

Snowshoeing, Hiking & Leashed Dog trails

Harold Libbey, Outback, Lynx, Ghost, Winter Trail

Trail Name	Length (in miles)	Blaze Color	Elevation Gain	Rated	Groomed (for skiing)
DEER RUN	.4	Yellow	29' up / 57' down	easy	Yes
GHOUST	.4	Lt Blue	151' up / 46' down	back country	No
HOLMQUIST HOLLOW	.4	Blue	75' up / 33' down	difficult	Yes
LYNX	.6	Blue	169' up / 58' down	back country	No
MOOSE ODYSSEY	3.1	White	344' up / 346' down	intermediate	Yes
OUTBACK	1.0	Yellow	112' up / 112' down	difficult	No
TURKEY TROT	.6	Red	29' up / 57' down	easy	Yes
WINTER	.5	Green	12 ' up / 151' down	back country	No
		(ribbons)			



YOUTH SPORTS

FEBRUARY–MARCH

INDOOR SOCCER

Saturday Mornings starting 02/01– 03/14

6 Week Session, \$50

9:00-9:50am– Ages 3 & 4

10:00-10:50am– Ages 5 & 6

11:00-11:50 am– Ages 7 & 8

12:00-12:50 pm- Ages 9-11

At Newbegin Gym

GYMNASTICS

Monday evenings starting 02/03

6 Week Session, \$55

3:45-4:30pm– Beginner Gymnastics

4:30-5:15pm– Advanced Beginners

5:15-6:00pm– Cheer Tumbling

At Newbegin Gym

TRACK & FIELD

GNG Jr. Track starting 05/26

Tuesdays at 5:30pm

MINI SPORTS!

TINY TEE'S BASEBALL CLUB, \$45

6 Week session beginning 02/07

Friday's 9:00-9:45 am

TINY TEE's TRACK & FIELD CLUB, \$45

6 – week session beginning 03/27

Friday's 9:00-9:45 am

At Newbegin Gym

T-BALL PRE SEASON

A collaboration with GNG Little League

ROOKIE SKILLS & DRILLS CLINIC , \$40

(Ages 4 years & 5 years who have not played before)

Sunday afternoon beginning 03/22

4 Week session 12:00-1:00pm

MVP SKILLS & DRILLS CLINIC , \$40

(for 5 year olds with experience & 6 years old)

Sunday afternoon beginning 03/22

4 Week session 1:00-2:00pm

Registration Information:

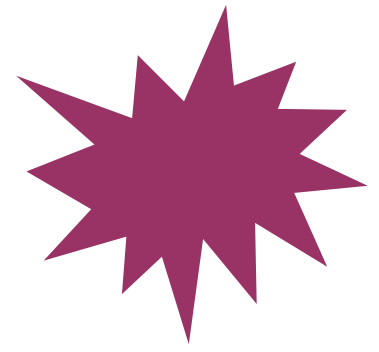
Gray Parks & Recreation

Sarah Rodriguez, Recreation Programmer

Srodriquez@graymaine.org

207.657.2323 www.grayrec.com

YOUTH STEAM



BROADWAY FOR BEGINNERS

BEST OF BROADWAY WITH LAUREL JORDAN, \$80

Do you love to sing? Do you love to dance? Then this is the class for you! Whether you are a beginner or a seasoned actor, everyone will learn something in this fun class. We will explore what it means to be “Broadway Awesome” as we learn songs and dances from some of your favorite Broadway shows including Sound of Music, Grease, Annie, Moana and more!

Wednesday: 3:45-5:45pm at Gray Public Library (Session begins 01/22 and includes Early Release days beginning at 1:45pm)

MAD SCIENCE

SECRET AGENT LAB \$120

Look out 007! Secret Agent Lab is in session! Students will learn about forensics, evidence gathering and analysis, while building their skills of recall and observation. These gumshoes will develop the tools of the trade to sniff out forgeries and counterfeits. This is the perfect class for students who are seeking to learn how investigative science relates to their world. Students will become spies in training and learn that detectives are really just scientists in disguise!

Thursday: 3:30-4:30 at Russell School (Session runs from 01/23 -03/19)

VACATION CAMP

February 17th– February 21st, \$30-\$55/day

In a galaxy not so far away . . . the Jedi Knights are calling upon their many brave Padawans to learn the Jedi lessons and fulfill their destiny. Campers will begin the week as Padawans who are preparing to begin their Jedi training. Throughout the week, these Padawans are challenged through daily Star Wars activities. Each day will focus on a Jedi skill through games and activities with their team ending with Red vs Blue Jedi wars on Friday. Discover the force within you through teamwork, confidence building exercises, and decision-making games. May the force be with you!

For more information please contact:

Nellie Levier, Child Care Service Coordinator

nlevier@graymaine.org | 657.6762

SAVE THE DATE!

Parents Night Out!

02/14, 03/20

SAVE THE DATE!

GNG Winterfest

03/06/2019