



Gray Community Endowment & Friends of Libby Hill

Promoting Community Through Open
Space Recreation



Libby Hill Forest

November 7th 2019

- Learn history of volunteers at Libby Hill
- Who owns Libby Hill?
- Why promote Libby Hill?
- What it takes to keep it going?

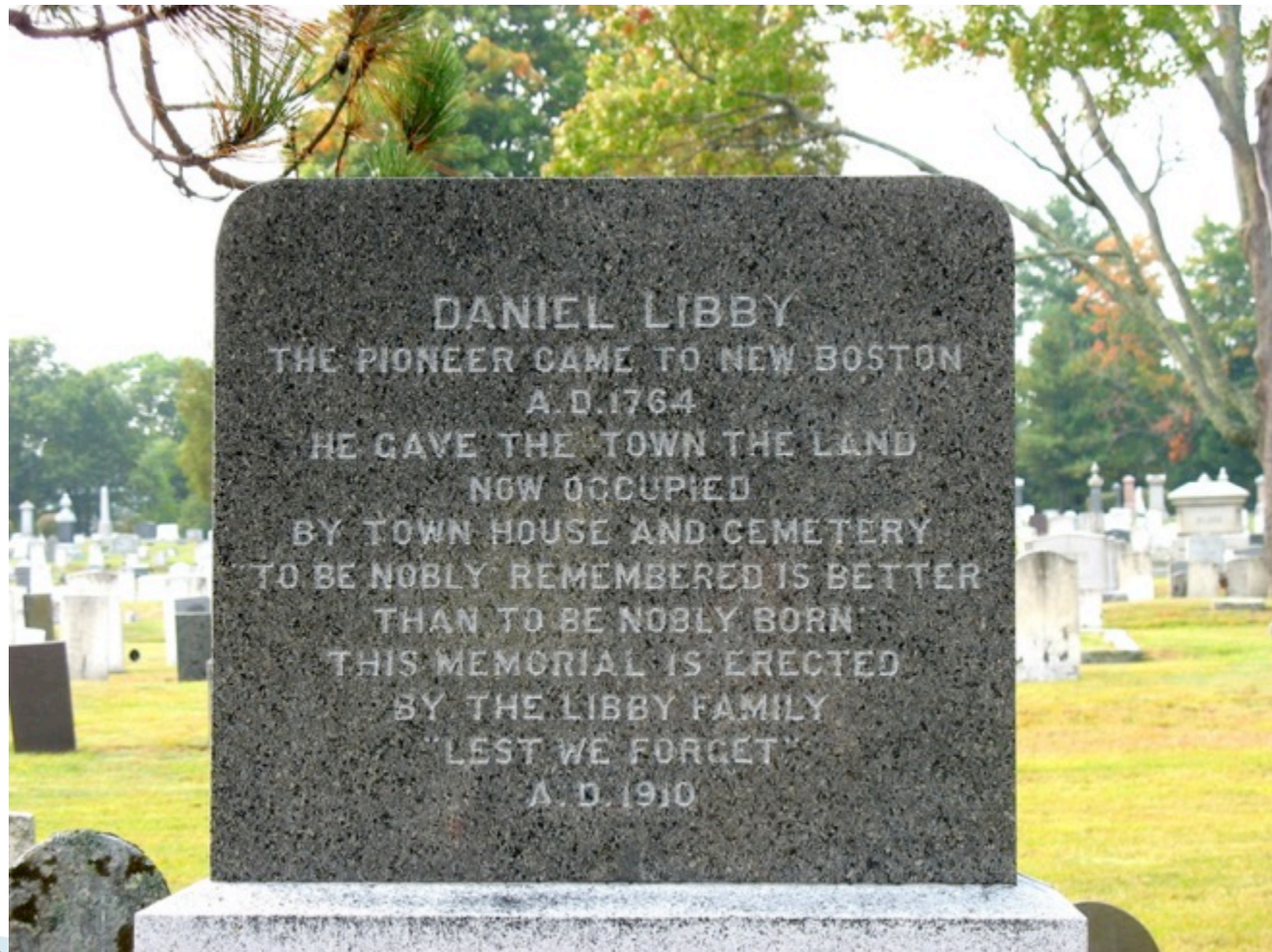


Libby Hill Trails Inventory

- 6 miles of groomed ski and multi use trails
- 2.5 miles of single track hiking trails
- Website with 500 unique visitors per month
- Shed for equipment
- 1 Snowmobile & 1 ATV with Tracks
- 3 Ski Trail Groomers
- Tree ID signs & Orienteering Course
- Kiosks at parking lot and one trail head



How it all Began



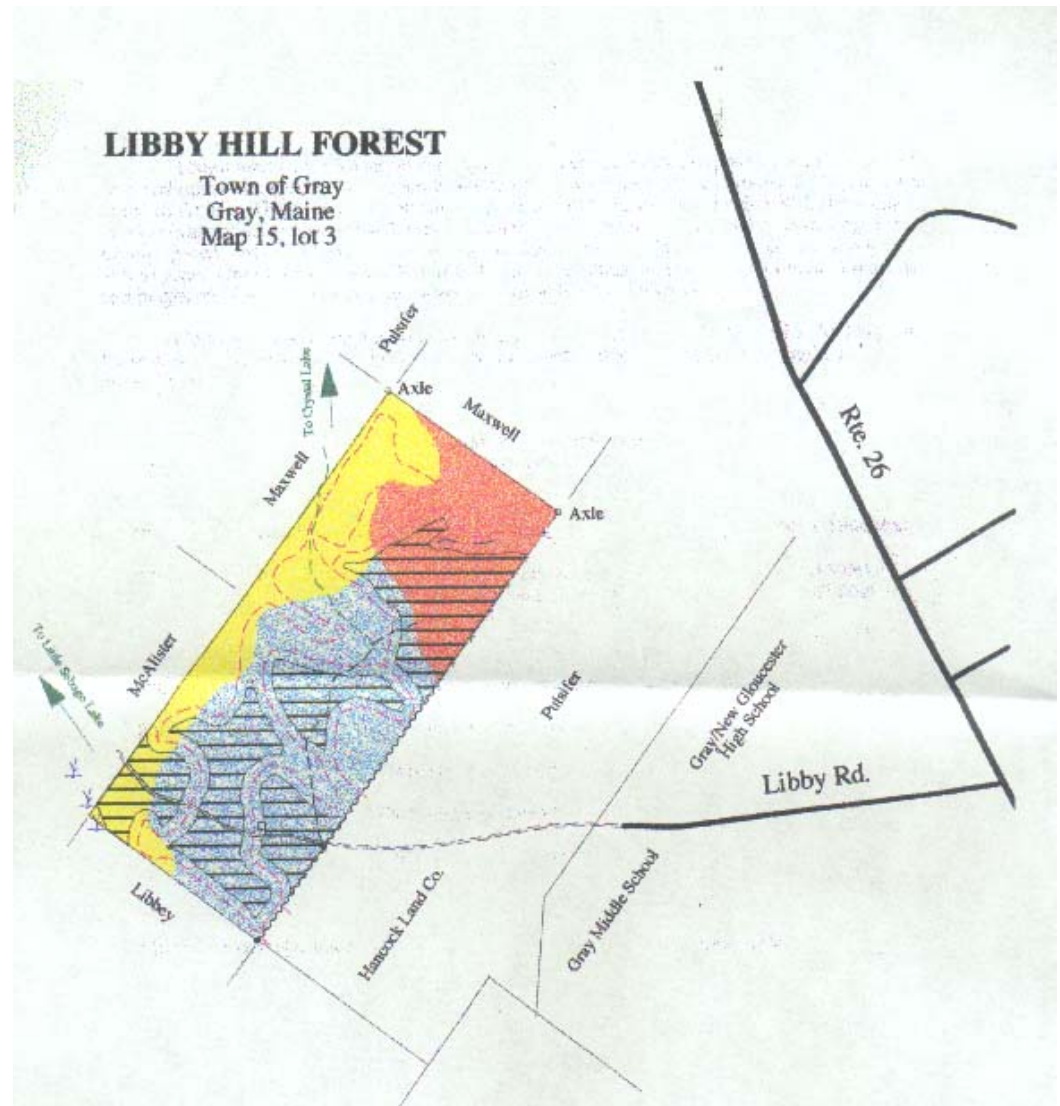
Libby Hill 1762–1970

Owned and Settled by the
descendents of Daniel Libby,
one of the original settlers of
Gray (New Boston)



1973

73 Acres
donated to the
town by the
Dow family,
descendents of
Daniel Libby.



Libby Hill Forest

– Mission Statement – 1999

- *The Libby Hill Forest seeks to provide the community of Gray with a public space that facilitates trail-based activities, that have a low impact on the land which preserves and promotes educational, recreational, and natural resources.*



Libby Hill: Timeline

- 1971 – 73 Acres donated to town
- 1999 – Trail committee established by town council
- 2000 – Trails roughed out
- 2000 – Project Of The Year – Presented by Town of Gray
- 2001 – 5 miles Trails opened... trail committee stopped meeting, website opened



1999–2001

- 5 Miles of multi-use recreation trails created
- Built with the help of over 100 volunteers and a \$27,000 Maine Forest Service grant.
- www.LibbyHill.org goes live



Libby Hill: Timeline

- Gray Community Endowment Formed
- 2001 – SkiDoo Skandic Snowmobile & Tidd Tech Groomer
- 2001 – Storage Shed Built
 - Equipment and Materials Purchased From Timber Proceeds



Libby Hill: Timeline

- 2003 & 2004 – Harold Libbey parcels donated to GCE (46 acres)
- 2005 – Cell Tower Built
- 2007 – 2.5 Hiking Trails finished on GCE Land

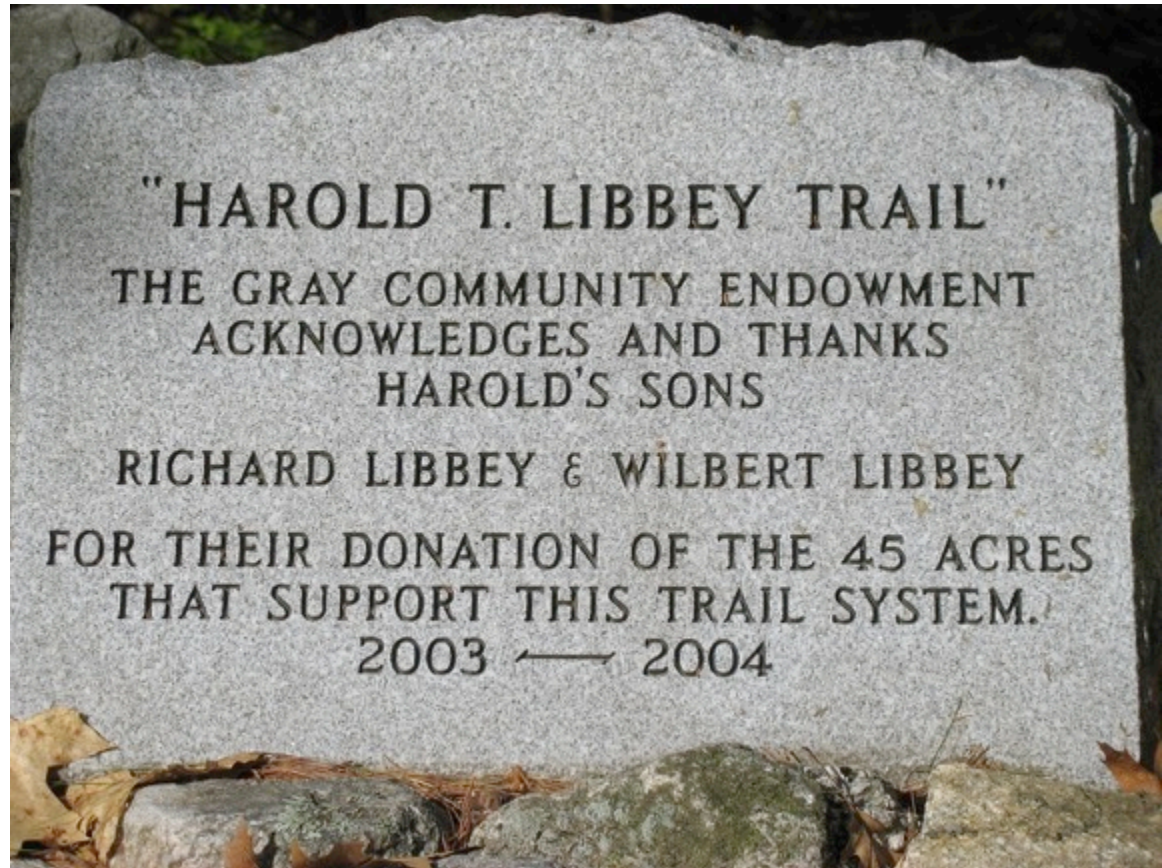


2003–2004

45 Acres Donated to GCE

by

Richard & Wilbert Libbey



2004 –2007

Harold Libbey
and Outback
trails built.



Libby Hill: Timeline

- 2009 – Hancock Land Purchased by GCE
 - Total Purchase \$160,000 Initially Privately Financed
 - Land for Maine's Future \$69,000
 - Fund Raising/Donations \$51,000
 - Town of Gray \$25,000
 - Davis Foundation \$7,500
 - Fields Pond Foundation \$7,500



Libby Hill: Timeline

- 2009 – Friends of Libby Hill – Formed
- 2012 – Arctic Cat Bearcat & Yellow Stone Groomer Acquired by GCE



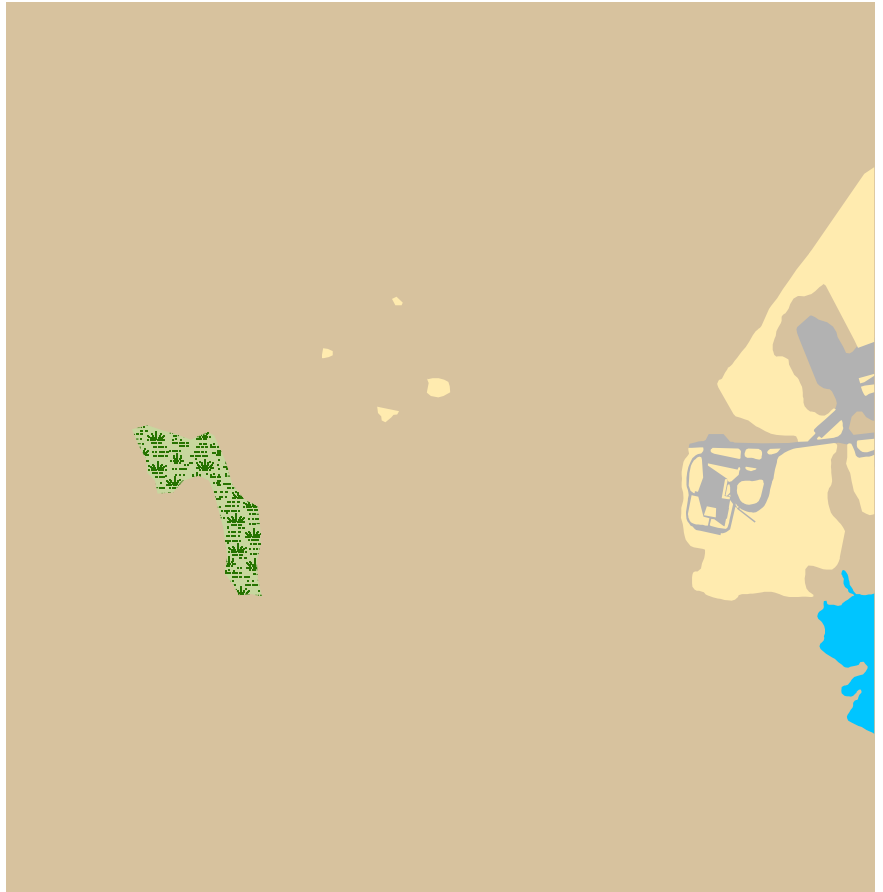
Libby Hill: Timeline

- 2015 – Polaris Sportsman ATV Acquired by GCE



Trails use these properties

- Town of Gray
- SAD 15
- Gray Community Endowment
- Durgin & Rogers



Events

- Longest Day Running Race
- High School & Middle School Cross Country Running & Nordic Teams Practice and Races
- High School and Middle School Classes
- Outdoor Club



Core Volunteers

- Carl Holmquist
 - Tracy Ross
 - Wayde Gendreau
 - Jim Wurgler
 - John Keller
 - Anne Gass
 - Tom Baiocchi
 - Dean Bennett
 - Sandy Carder
 - Rick & Dennis McCann – McCann Fabrication
- Steve McPike
Dana Giggey
Jeff McEvoy
Matt Johnson
Barney Boynton
Wayne Wood
Doug Wilson
Brian Edwards
Jamie Carder



Trail Work by Friends of Libby Hill

- Remove small brush from existing ski trails
- Tree Pruning
- Bush Hogging
- Beaver Damage
- Remark Survey Lines
- Signage
- Seasonal Cleanup
- Storm Damage
- Event Hosting



Activities – Year Round Options

- 30 minutes from Portland, Lewiston, and Brunswick
- Dry Trail Terrain
- Good Parking
- Safe
- Accessible to 1000 students of GNG
- 30–50 more inches of snow than Portland
- Free Access
- Exceptional Mapping and Trail Marking
- Virtual Support at www.Libbyhill.org



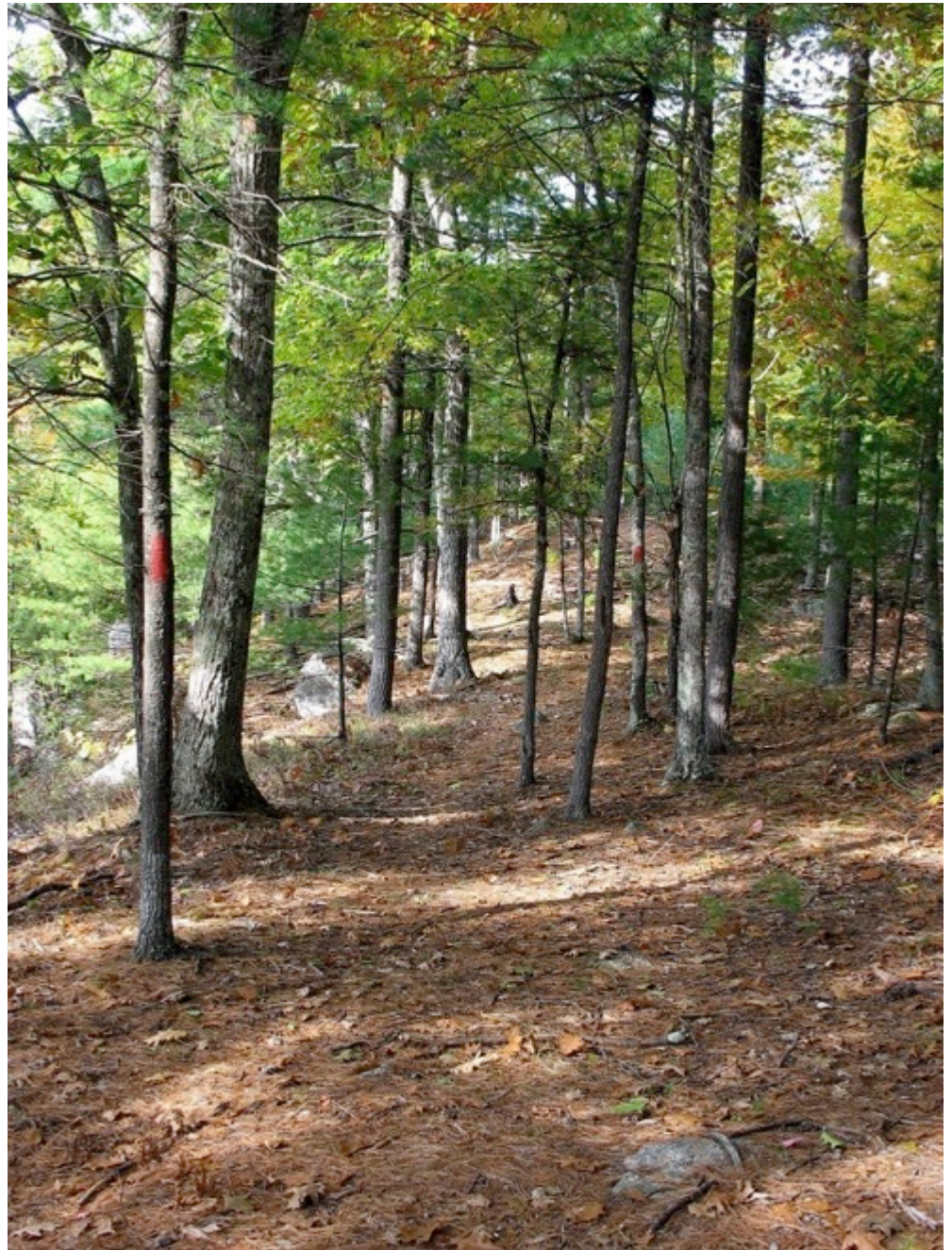
Groomed X-Country Skiing



Snowshoeing



Hiking Trails



Water Features



Exceptional Running Options!



Mountain biking



Four Geocaches



Eight Orienteering Courses



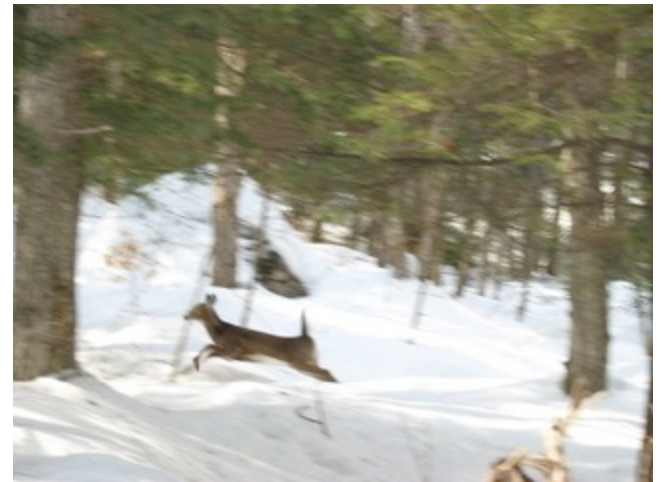
Maps available at www.LibbyHill.org



Dog Walking



Nature Watching



History

- 250 Years of Libby Family History
- 19th Century Farm Artifacts
- Granite Quarry
- Stonewalls



Tree ID Signs and Downloadable Tree Scavenger Hunt for Kids



Guided Tours and Events



Horses Allowed on Some Trails



Multi- Use Trails

- 5+ Miles
- Root and Rock Free
- Park Like Experience
- Designed by Olympian John Morton
- Mowed in Summer
- Maine Conservation Land (No Hunting)



Hiking/Biking/Snowshoe Trails

- 3.5 Miles of traditional trails (3–5 feet wide)
- Closer contact to nature
- No motorized vehicles or horses



ATV/Snowmobile/Horse Trails

- 1.5 Miles Connected to 14 additional Miles of motorized trails in the Libby Hill Quadrant
- Provide unlimited options for 'back country' exploration



www.LibbyHill.Org

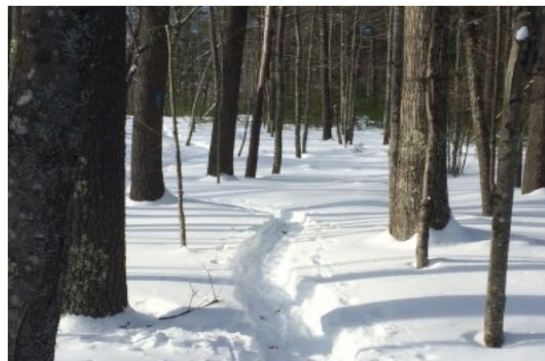
Promoting community through open [DIRECTIONS](#) [ABOUT](#) [TRAILS](#) [TO DO](#) [SUPPORT](#)

LIBBY HILL TRAILS space recreation

[HOME](#)[CALENDAR](#)[TRAIL MAPS](#)[TRAIL
REGISTER](#)[VOLUNTEER
LOG](#)[FAQS](#)[CONTACTS](#)

Open for Business!

February 1, 2015 by Steve McPike | [Comments Off](#)



Lynx Trail

TODAY'S WEATHER



[Click for
weather
forecast](#)

After a long snow drought, over 30 inches of snow fell this week to transform Libby Hill Trails into a



Financial Support

Gray Community Endowment

Events
Donations
Grants

MSAD 15

Athletic Department

Town of Gray

Recreation Department



Gray Community Endowment

Our Mission

Provide strategic leadership and resources to help make Gray a healthy, vibrant, and sustainable community.

- Board Members
 - Carl Holmquist
 - Sharon Giggey
 - Val Razsa



Volunteers

- 1,000 hours per year volunteer time to keep the trails open and thriving



Learn More about ‘Friends of Libby Hill’ at www.LibbyHill.Org



We Need You

- Come Check Out The Trails
- Be Respectful Of All Users
- Spread The Word





**LIBBY HILL
FOREST**

Thank You!

