

University of Connecticut Technical Assistance for Brownfields EPA Region 1

Marisa Chrysochoou, PhD

Professor and Program Director for UConn TAB

University of Connecticut



EPA's Technical Assistance to Brownfields (TAB) Communities Program

Transforming environmental eyesore, hazards and liabilities into community assets

What is TAB?

The Technical Assistance to Brownfields (TAB) Communities Program helps communities, states, tribes and others understand risks associated with contaminated or potentially contaminated properties, called brownfields, and learn how to assess, safely clean up and sustainably reuse them.

EPA funds six organizations—**Kansas State University (KSU)**, the **New Jersey Institute of Technology (NJIT)**, the **Center for Creative Land Recycling (CCLR)**, **West Virginia University Research Corporation**, the **International City/County Management Association (ICMA)** and the **University of Connecticut**—to serve as independent sources of technical assistance. Each of these TAB providers has an extensive network of partners, contractors and other contacts that provides services across the country. They help communities tackle a variety of challenges related to identifying, assessing, cleaning up and redeveloping brownfields.

TAB Providers Help Communities

TAB providers serve as an independent resource and can provide expert technical assistance to help communities understand:

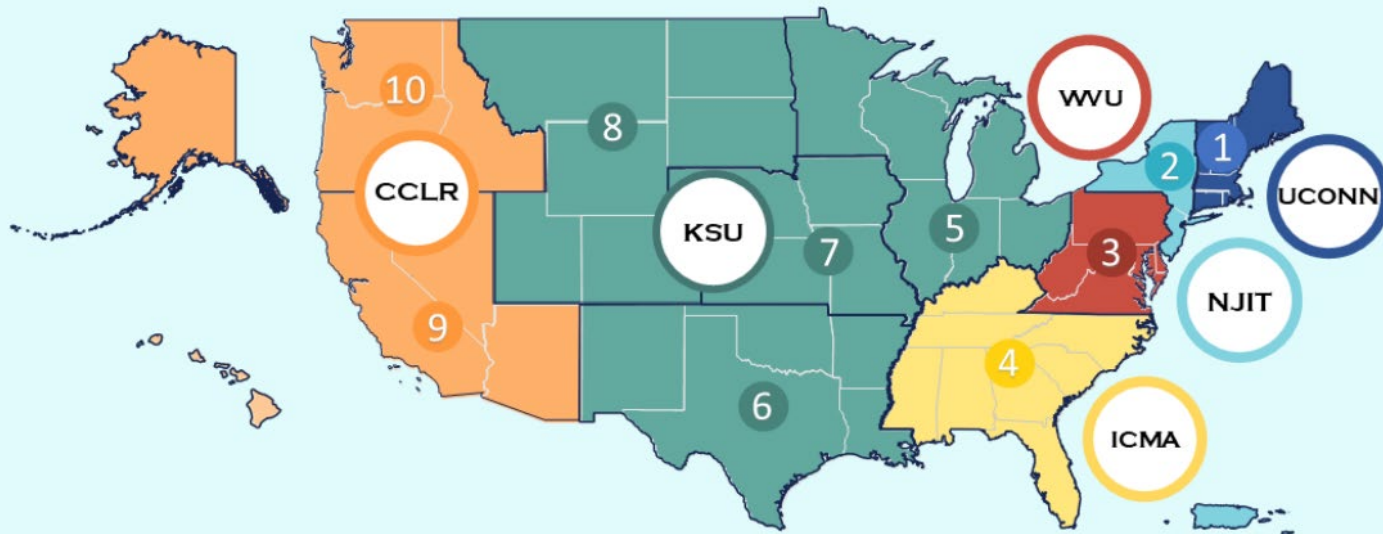
- How to acquire, assess, clean up and redevelop brownfield properties;
- How to plan outreach to engage affected neighbors and residents;
- How science and technology are used for site assessment, remediation, redevelopment and reuse; and
- How to comply with voluntary cleanup requirements.

TAB Providers can offer assistance with:

- Preparing grant applications;
- Performing site inventories;
- Reviewing historical information;
- Designing the investigation/ sampling/ field analysis; and
- Supporting cleanup and redevelopment planning.



Regional Partners



CCLR CENTER FOR CREATIVE
LAND RECYCLING

KSU KANSAS STATE
UNIVERSITY

UCONN UNIVERSITY OF
CONNECTICUT

ICMA INTERNATIONAL CITY/COUNTY
MANAGEMENT ASSOCIATION

NJIT NEW JERSEY INSTITUTE
OF TECHNOLOGY

WWU WEST VIRGINIA
UNIVERSITY RESEARCH
CORPORATION

The numbered circles in the map represent EPA's ten Regional offices, each of which is responsible for the execution of our programs within several states and territories.



UCONN

UConn TAB

Our Team



Marisa Chrysochoou, Ph.D.
Program Director
Professor and Department Head, Civil and
Environmental Engineering
University of Connecticut
Marisa.chrysochoou@uconn.edu



Nefeli Bompoti, Ph.D.
Program Manager
Assistant Research Professor, Civil and
Environmental Engineering
University of Connecticut
Nefeli.bompoti@uconn.edu



Randi Mendes, Ph.D.
Community Liaison
Civil & Environmental Engineering
University of Connecticut
randi.mendes@uconn.edu



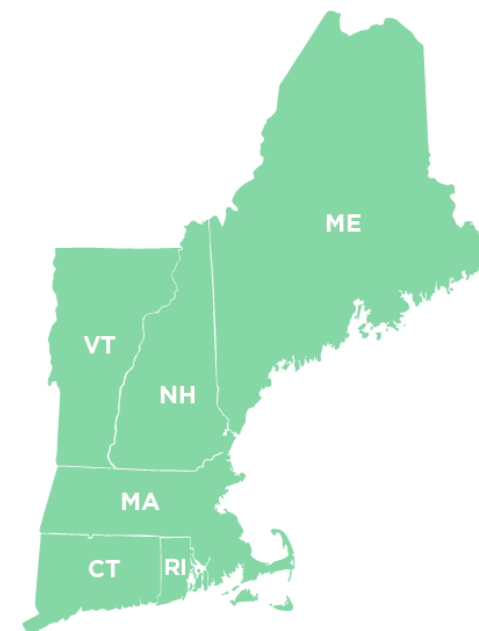
Rupal Parekh, Ph.D.
Community Engagement Coordinator
Assistant Professor
School of Social Work
University of Connecticut
Rupal.parekh@uconn.edu



Sara Wakai, Ph.D.
Public Health Expert
Assistant Professor
Center for Population Health
University of Connecticut
Sara.wakai@uconn.edu



David Dickson, Ph.D.
Continuing Education Coordinator
Interim Director, Center for Land Use
Education and Research
University of Connecticut
David.dickson@uconn.edu



**Technical Assistance for
Brownfields Program**

EPA Region 1

uconn-tab@uconn.edu
<http://tab.program.uconn.edu>



UConn

Our services at a glance



Direct Technical Assistance

Technical Document Review

- Summary of Environmental Site Assessment Reports, Remedial Action Plans, Planning Documents

Brownfields Proposals Review

- EPA Brownfield Program proposals (assessment, cleanup, multipurpose, RLF, Job Training), and State Program proposals

Access to Resources

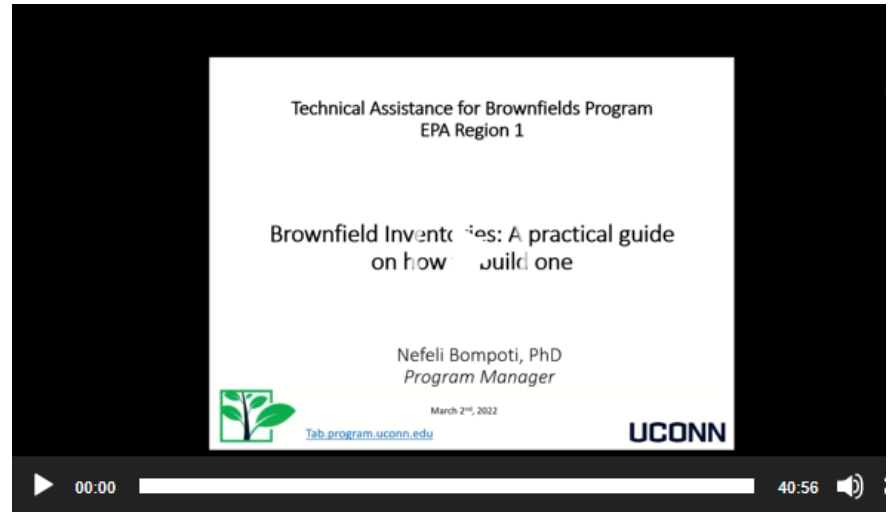
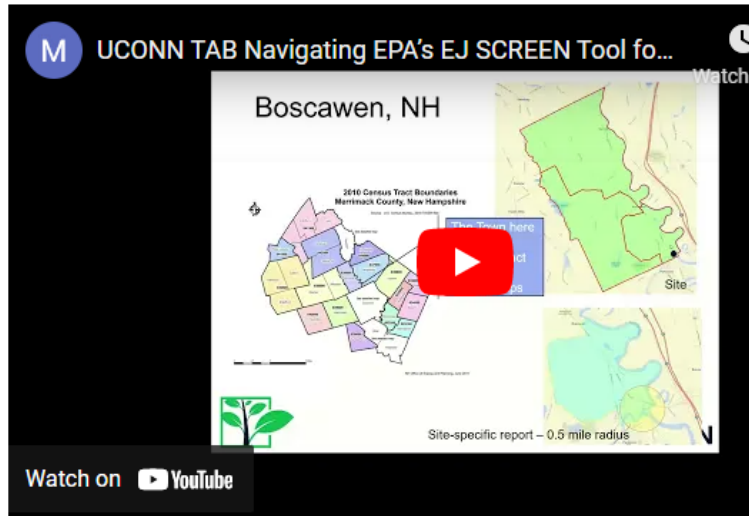
- Fact sheets, example proposals, and documents

Online Office Hours

- Answer Technical Questions



Workshops and Webinars



EJScreen Short Course

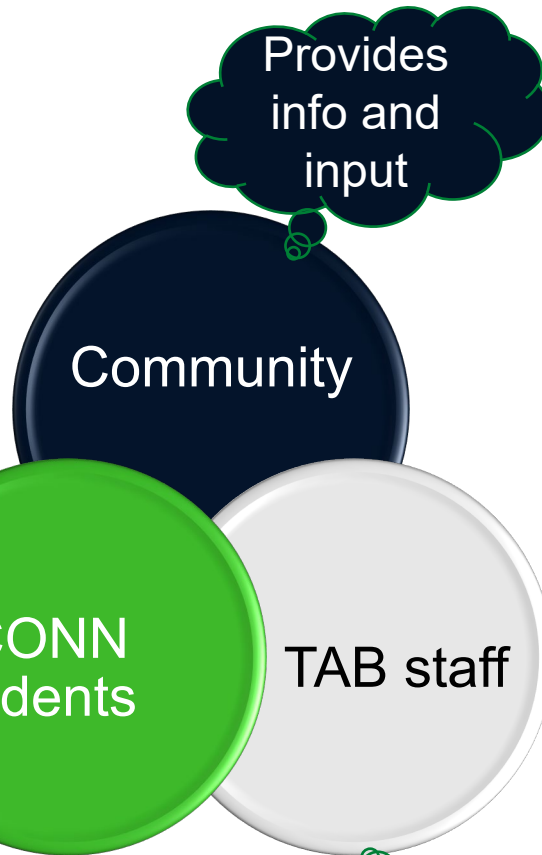
UConn TAB Region 1

COMING
SOON

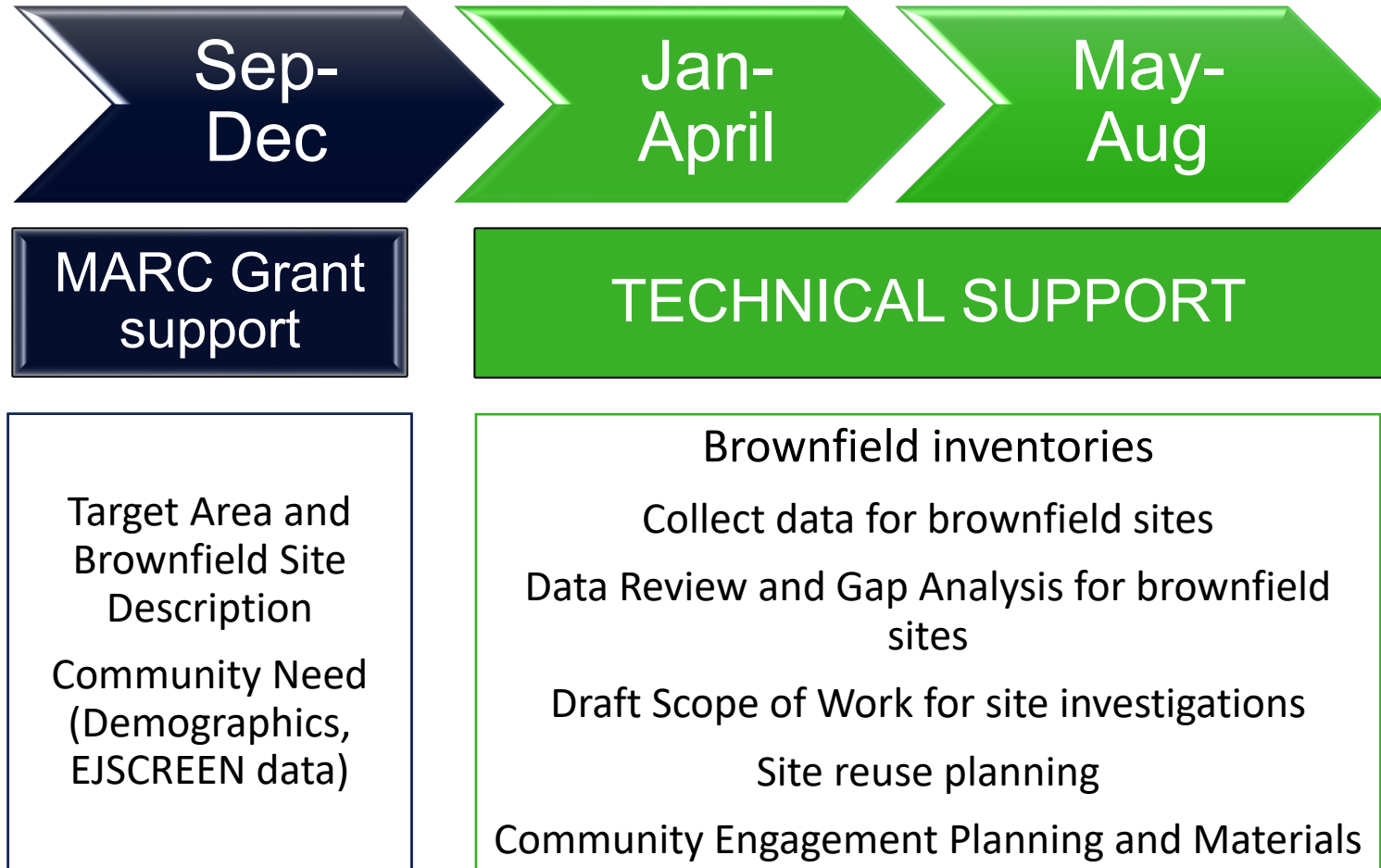


UConn
UConn

Municipal Assistance Program



Municipal Assistance Program



Possible Support for 2022 EPA Brownfields Assessment Grant

Technical Projects

- Brownfield inventory and prioritization
- Data collection of priority sites
- Draft scope of work for Phase II of priority sites
- Data gap analysis for sites with previous reports
- Site reuse assessment for priority sites

Community Engagement

- Create and maintain interactive website
- Create community engagement plan
- Co-organize community events
- Obtain community feedback



Brownfield Inventory

Location,
Size,
Buildings

Past uses,
Zoning

Environmental
Justice

Flood zones,
wetlands

Tax status

Reports,
Documents

Please select from the drop-down menus for the "Status," "Site type," "Tax Payment status," "Existing Buildings," "Site photos available," and "Site documents available" fields

Site Name	Address	Zipcode	Parcel Number	Status	Site Type	Site size (acres)	Current Zoning	Current Owner	Tax Payment Status	Existing Buildings	If yes, sq ft of buildings	Age of buildings	FEMA Flood zone	Opportunity zone	Environmental Justice Community	Past Uses
		06524		Unknown	Vacant lot	1.25 B-1			Delinquent	No	N/A	N/A	No	No	No	"Solid waste facility"
		06524		Inactive	Mixed Use	3.67 B-1			N/A	Yes	5814 above grade, 2907 below	1940	No	No	No	Office building, chemical storage
		06524		Under Remediation	Mixed Use	138.5 B-1			N/A	Yes	"Building 2" - 9187	2008	No	No	No	Airport up until the 60's
		06524		Inactive	Industrial site	2 R-65 (Grandfathered as B-1)			Current	Yes	10,194	1960	No	No	No	Industrial plant, metal refining
		06524		Inactive	Other (describe in	0.7 R-65			Delinquent	No	N/A	N/A	No	No	No	Residential property w/ possible contamir
		06524		Inactive	Vacant lot	1.5 R-65			Delinquent	No	N/A	N/A	No	No	No	Unknown



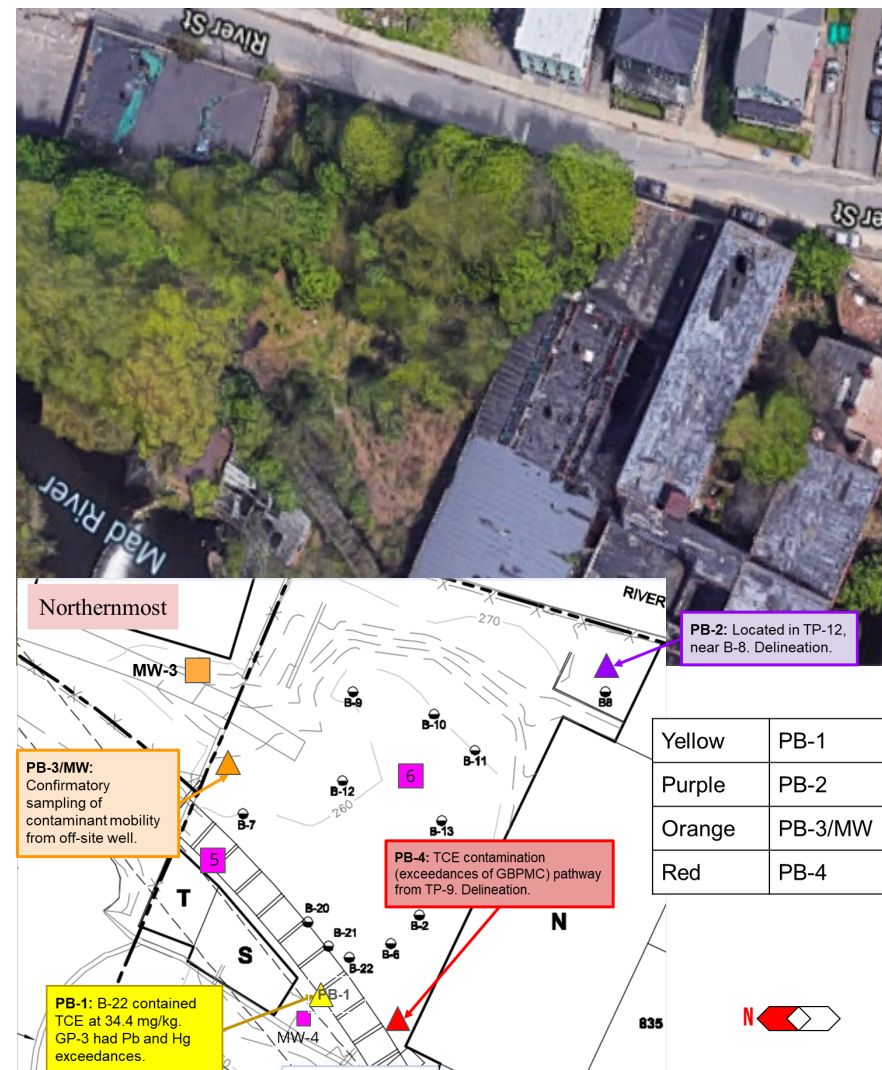
Data Gap Analysis

Review past
environmental
reports

Identify locations
with potential
releases of
contamination

Assess whether
data is sufficient
to proceed with
remedial design

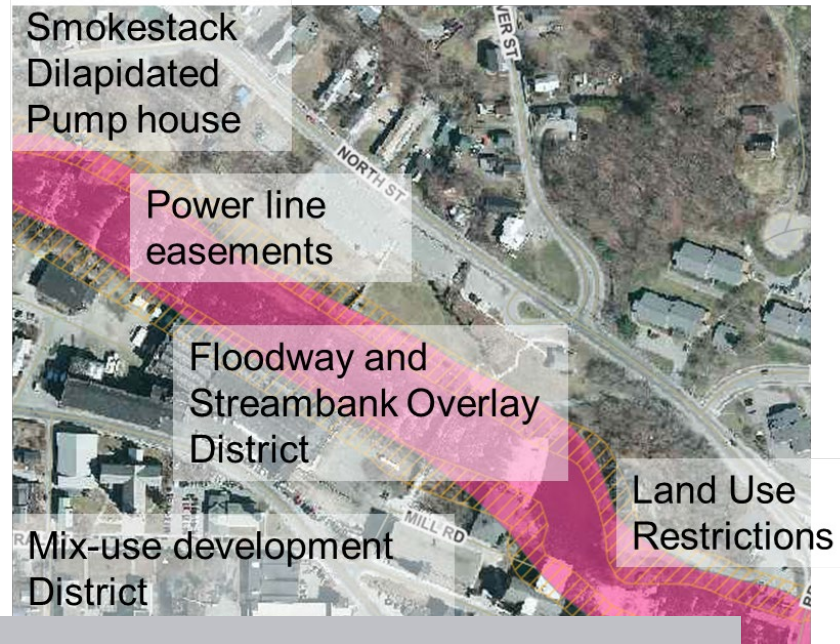
Propose
additional
sampling if
necessary



Example, Gap analysis for
Button Factory in
Waterbury, CT

Site Reuse Assessment

- Community Demographics
- Nearby Businesses
- Zoning Regulations
- Site Restrictions
- Floodplains & Wetlands
- Remediation Restrictions
- Infrastructure Assessment



Community Engagement

NEW!



Public Workshop, Claremont, NH



Infographic, Bethlehem, NH



Example Community Engagement Website by CitizenLab

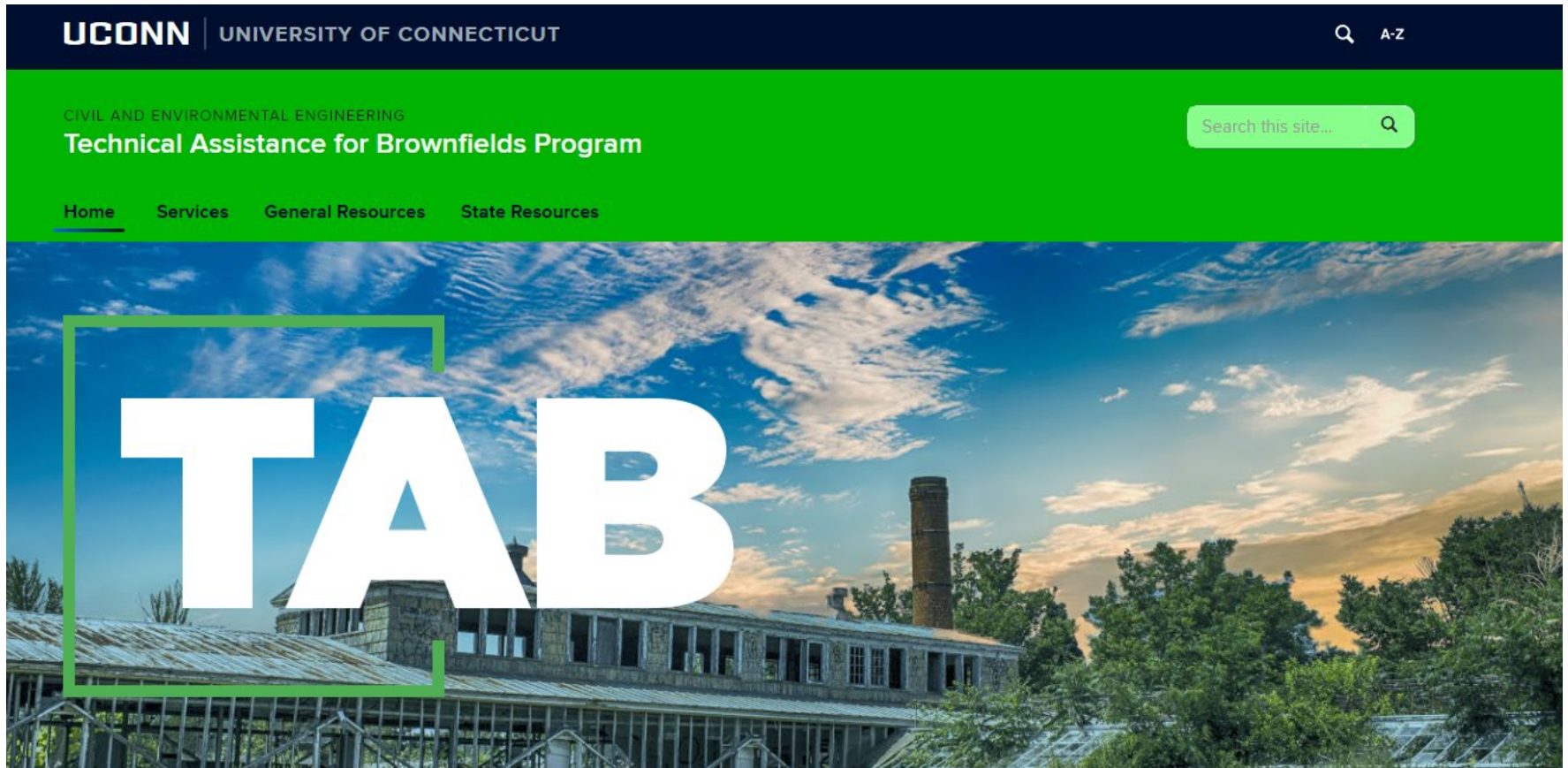
<https://envisionnorwich360.com/en/>

Example Community Engagement Website by UConn

<https://tab.program.uconn.edu/mt-trashmore/>

UConn

<https://tab.program.uconn.edu/>



UConn